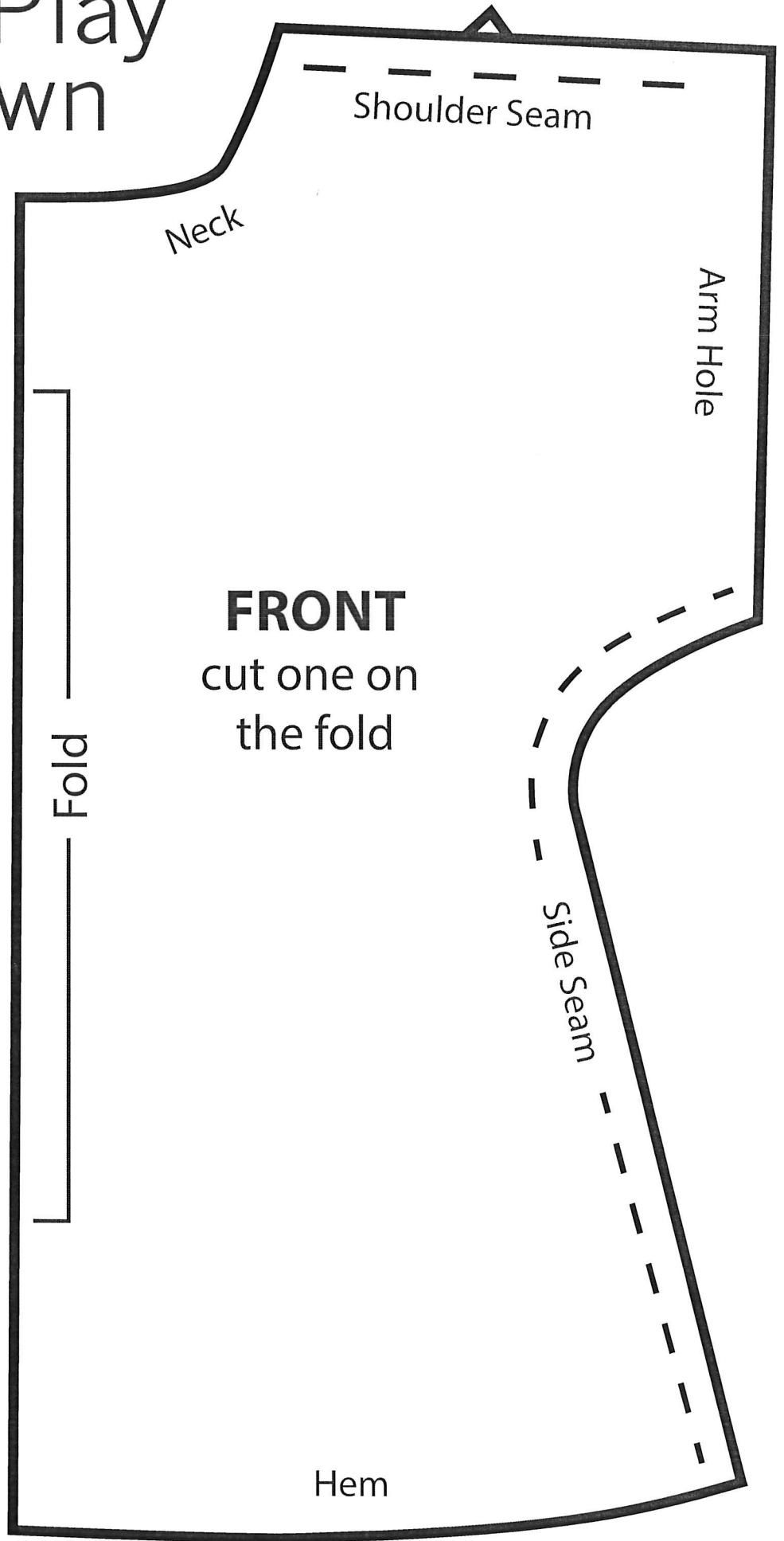


# Medical Play Doll Gown

## Instructions For Medical Doll Gown

1. Cut pattern as directed on the pattern pieces. (This pattern allows for 1/4" seam allowance.)
2. Zigzag stitch around all the pieces.
3. Pin and sew front shoulder seams to back shoulder seams, lining up the triangles on the shoulder seam and the seam sides. (Note: Sew at 1/4")
4. Hem bottom, back, and arm holes. (Note: If desired, you can use binding around the bottom, back, and arm holes; however, you will want to cut 1/4" off these areas before doing so to accommodate the added width of binding.)
5. Sew binding around neck. Leave enough binding to tie at the back of the gown (5-7 inches for each side). (Note: If desired, you can use snaps or Velcro instead of binding to fasten the back.)



# Medical Play Doll Gown - Page 2

