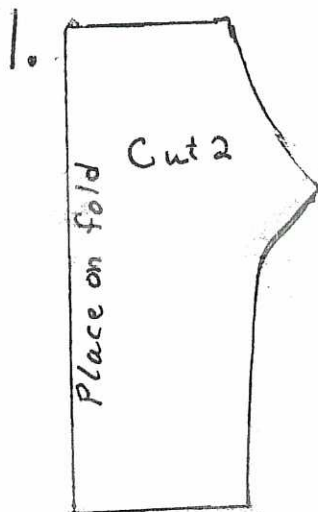


## Pajama Bottoms for the Primary Children's Hospital dolls.

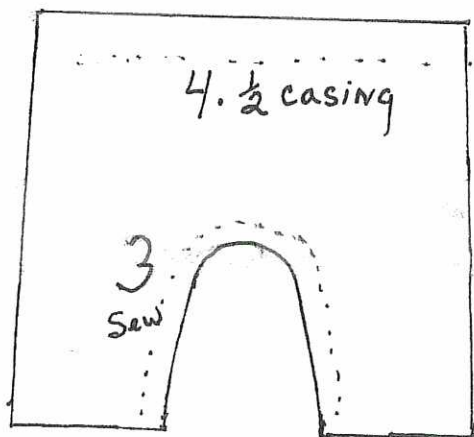
Use soft material, cotton/cotton blends/flannel.

You will need: 2 pieces 9½" x 8" or 1 piece 19" x 8" (I use a lot of scrap pieces);

9 ½" of ¼ inch elastic;

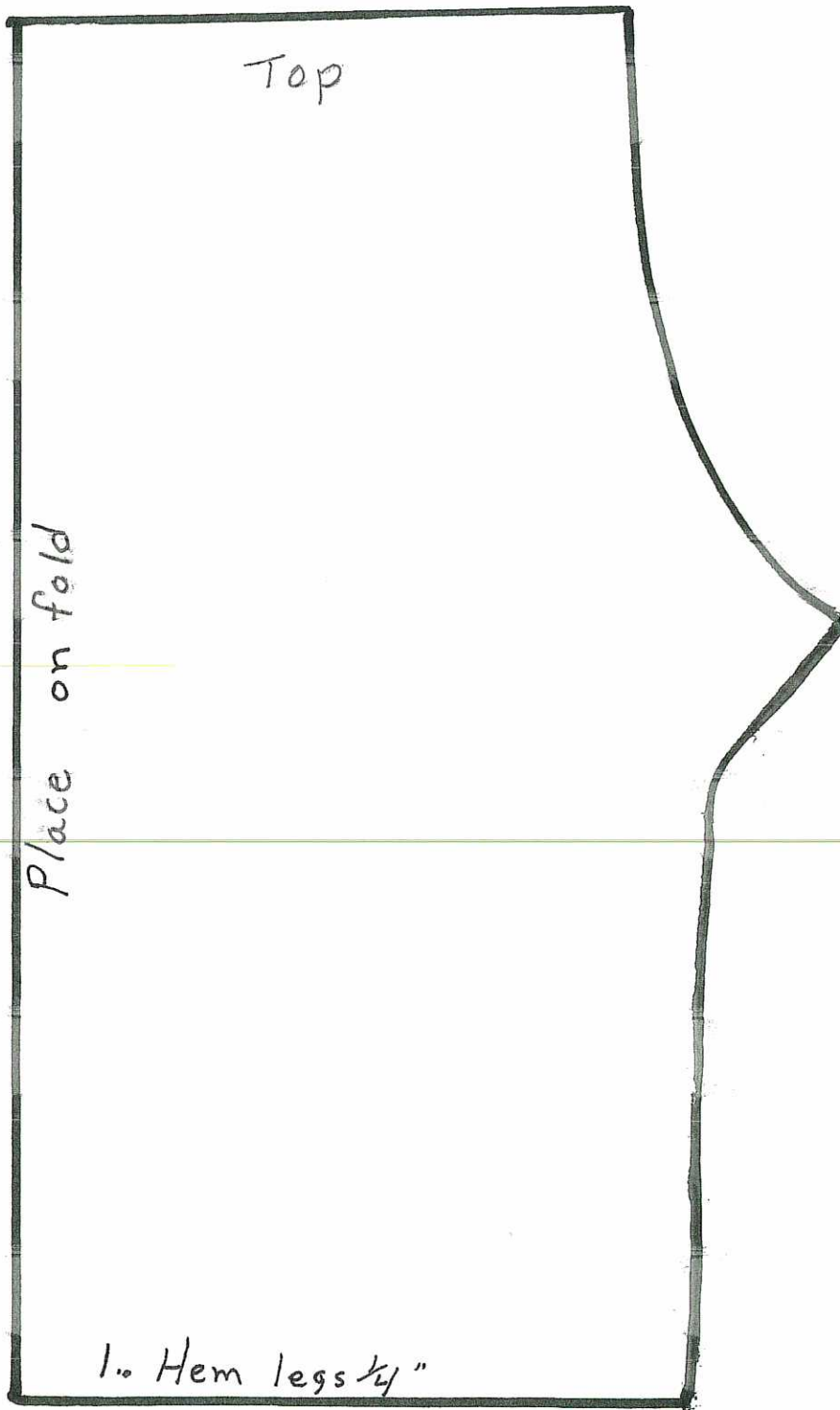


1. Cut two on fold. Serge or zigzag top edge and bottom edge of both legs. Hem both legs ¼".
2. Place both pieces right side together. Sew center seam from top to crotch (I like to serge.)
3. Open and match center seams with right sides together. Sew, forming legs.



4. Turn top down ½" and sew to make casing. Leave a small opening to insert elastic. Insert 9½" long elastic.
5. Sew ends of elastic together and close opening. Turn right side out and you are done.

Finished length of pajamas from waist to hem should be approximately 6 ½" long.



Top

Place on fold

1. Hem legs  $\frac{1}{4}$ "