

Colonic Manometry-Parent Guide

Colon Manometry:

Colonic manometry is a study to determine how well your child's large intestine is working, the large intestine is the final tube in the body where stool is formed, stored and then exits. A device called a "manometry catheter" is placed in the large intestine through the rectum while your child is asleep. Using a camera, called a colonoscope, this catheter will measure the pressure or contractions in the large intestine. This catheter is a long and flexible tube with sensors every few centimeters that measure the intensity, length, and order of contractions in the colon. Colonic manometry testing usually requires a three-day hospital stay.

Preparation:

Our Motility Physician likes to meet patients and guardian(s) prior to the test. There will be an appointment completed either in clinic or via telehealth. During the appointment, your child's medical history will be discussed, and an in-depth explanation of the Manometry Study will be provided.

The motility nurse will email you the instructions in preparation for the study. The instructions include **when and how** to perform a bowel cleanout that is specific to your child. Bowel clean out includes a specified amount of MiraLAX (PEG3350) with juice or Gatorade and administration of Senna or Ex-lax. The patient will also be on a clear liquid diet to assist in evacuating their colon of stool.

A clear liquid diet includes Gatorade, Jell-O, Popsicles, broth, apple juice, ginger ale and water.

The motility nurse will obtain your child's medical history and medications your child uses. Some medications alter the manometry study, therefore your child's medication may be weaned or stopped to prepare for an accurate study.

Schedule Overview:

- Day 1
 - Admission, please arrive at 1100 AM
 - **Hospital Address:** 100 Mario Capecchi Dr, Salt Lake City, UT 84113
 - When entering the building you will check in with our reception staff and they will direct you to the Inpatient Admitting Office. It is located on the first floor of the hospital, down the hall (on the right-hand side) from the security/reception desk. After checking in, they will direct you to what unit & room you'll be staying in for the duration of your stay.
 - Continuation of Colon Clean Out
 - Patients are usually admitted to the hospital for a colon clean-out with stool softeners, laxatives and/or rectal irrigations.
 - Patients will only be able to drink clear liquids and will get IV fluids during the clean-out to stay hydrated. If it is difficult for your child to drink the MiraLAX, a Nasogastric tube will be temporarily inserted to ease administration of bowel clean out.
 - They will not be able to eat or drink anything for 8 hours prior to the procedure.

- Day 2
 - Colonoscopy and Manometry Catheter Placement
 - The patient is completely asleep under general anesthesia during the procedure, so they will not have any pain or remember the catheter placement.
 - The manometry catheter is placed inside the colon, through the rectum, by your doctor using a long, skinny instrument with a camera on the end called a colonoscope.
 - After the catheter is in place, it is secured with tape near their bottom and inner thigh.
 - After the patient wakes up, they will return to their hospital room. The catheter will remain in place overnight, to allow anesthesia to wear off and the function of the colon to return to baseline.
 - As your child awakes from anesthesia it is important to assist your child in not pulling out the catheter.
 - They will not be able to eat or drink during this time, but they will stay hydrated by getting fluids through an IV. Your child will **not be able to have anything by mouth**, as this can alter the study.
 - They will have to stay in bed and will not be able to move much. This is to prevent the catheter from coming out. They will remain like this until the manometry study has been completed. Your child will use a bedpan, urinal, or diaper instead of going to the restroom.
- Day 3
 - Colonic Manometry Testing and Discharge Home!
 - The next morning, you will have an x-ray to make sure the catheter is still in the right place.
 - If it is, the nurse will come to your room and connect the manometry catheter to a computer and start the test (approx. 8am). The test is around six hours long and has three parts. It measures the squeeze of the colon at rest, after eating (approx. 10am), and after medication (approx. 12pm). You will be instructed when to order a meal or start feeds by the nurse. Otherwise, the patient will just be hanging out and resting in bed.
 - Once the study is complete (approx. 2pm), the catheter and tape are removed, and the patient will be discharged.
 - When the test is complete, the catheter is removed, and you can go home. The team will generally provide a plan for your medicines before you leave. Your doctor will let you know the results of the test within 1-2 weeks and make any changes to the care plan as needed.

You may consider bringing your child's favorite toys or games as they will need to remain in bed after the catheter is placed and during the study

Reassure your child that you will be with them during the entire test (except during catheter placement, during which time your child will be sedated)

Parent's Frequently Asked Questions

What will my child feel during the test?

- This test does not cause pain. However, a medication called Bisacodyl may cause belly cramping.
- Sometimes a small amount of water may leak from your child's bottom during the test
- After the study is complete, we remove the tape holding the catheter in place. Tape removal may be uncomfortable
- Removal of catheter is not painful

Why can't we do the study on the same day the manometry catheter is placed?

- We conduct the colonic manometry study the day after it is placed to allow anesthesia to be out of the system prior to beginning the study. Anesthesia is used to help your child sleep during the procedure. Anesthesia can alter the results of the study

Can my child have a sucker, hard candy or a swab after the catheter is placed?

- No, this can cause activity in the large intestine which may affect the study

What if my child is on TPN (Total Parental Nutrition)?

- Your child will not receive TPN while at the hospital. We will provide specific types of IV fluids that will keep your child's sugar stable and keep them hydrated. TPN can be started once they are discharged from the hospital

When will I receive the results of the study?

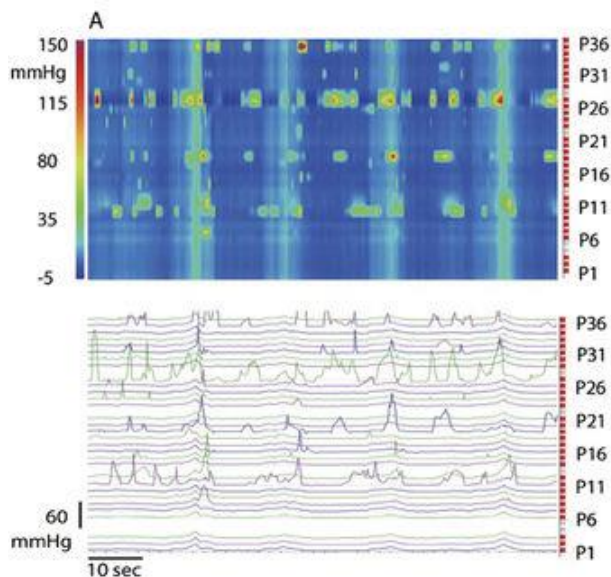
- The Motility Doctor will call you with results in approximately 1-2 weeks following the study and provide recommendations on how to further manage your child's care

Who do I call if I have any questions?

- Please call the motility nurse at 801-662-1619, option 2, option 2



Computer Cart



Pressure Tracings



Solid State
Manometry Catheter



Water Perfused
Manometry Catheter



Endoscope or
Colonoscope