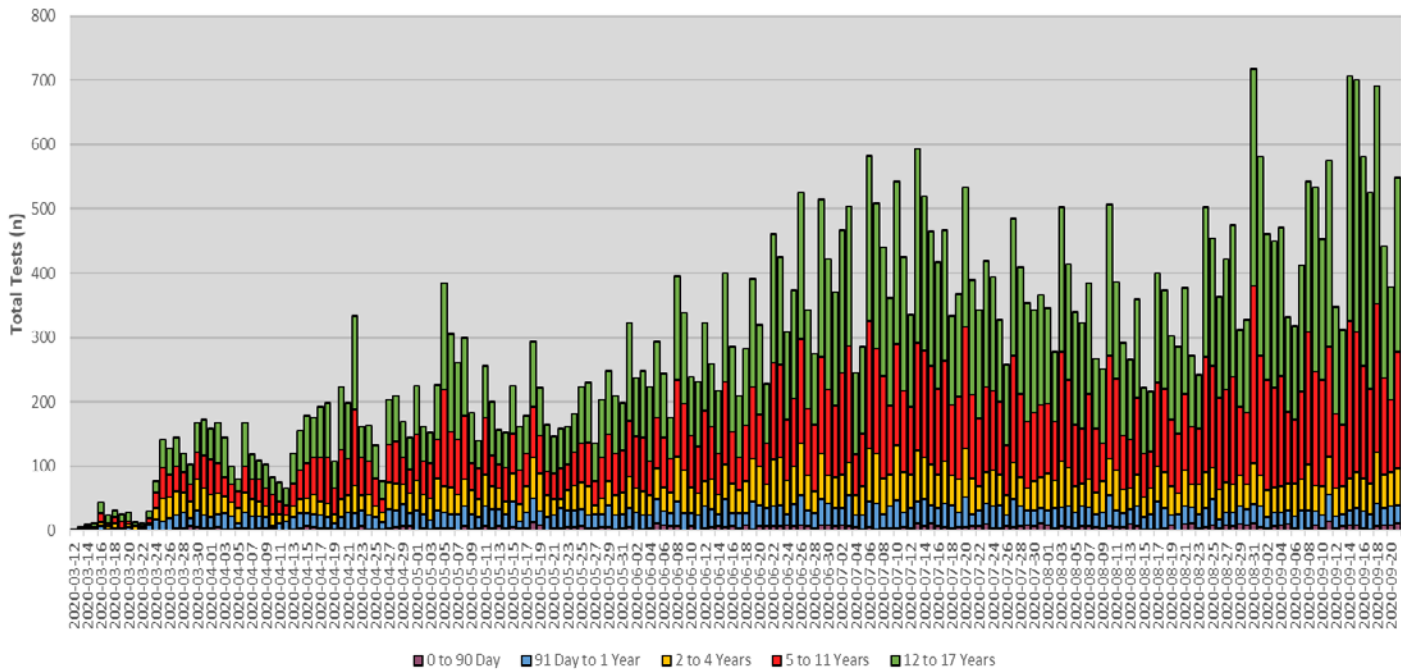


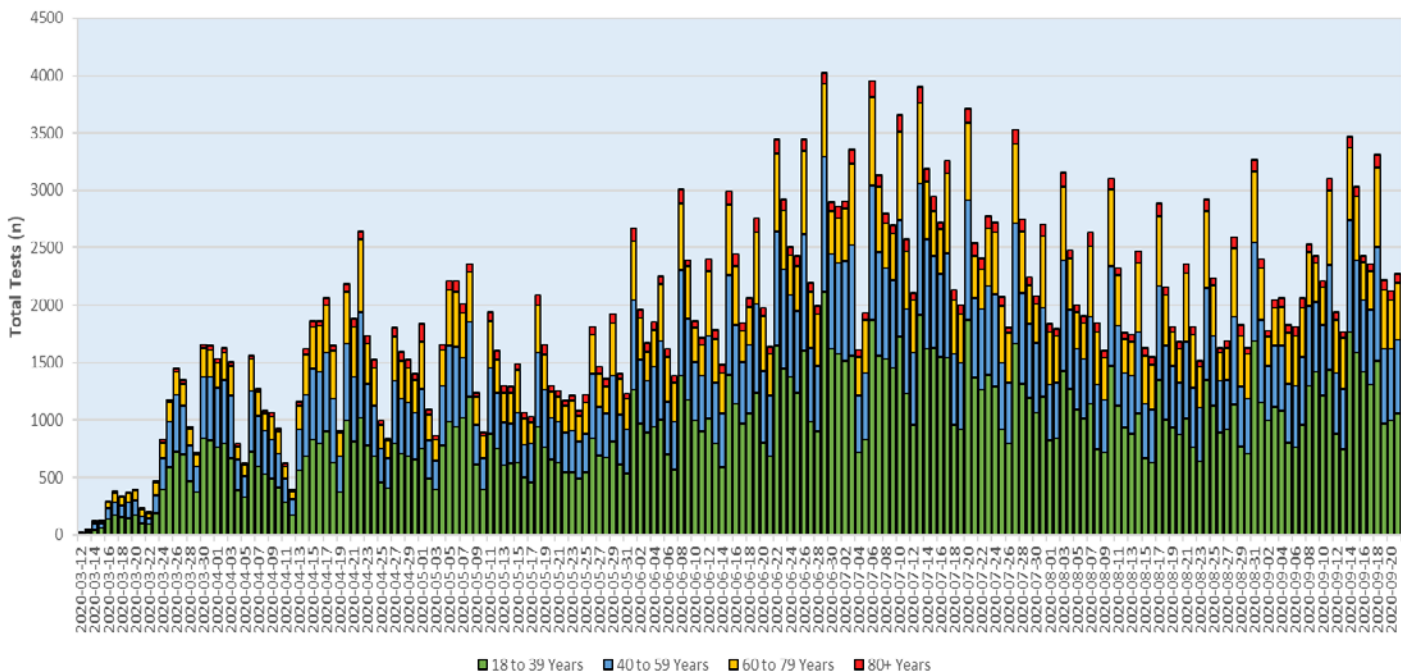
Pediatric COVID-19 Report

Report Date: September 22, 2020

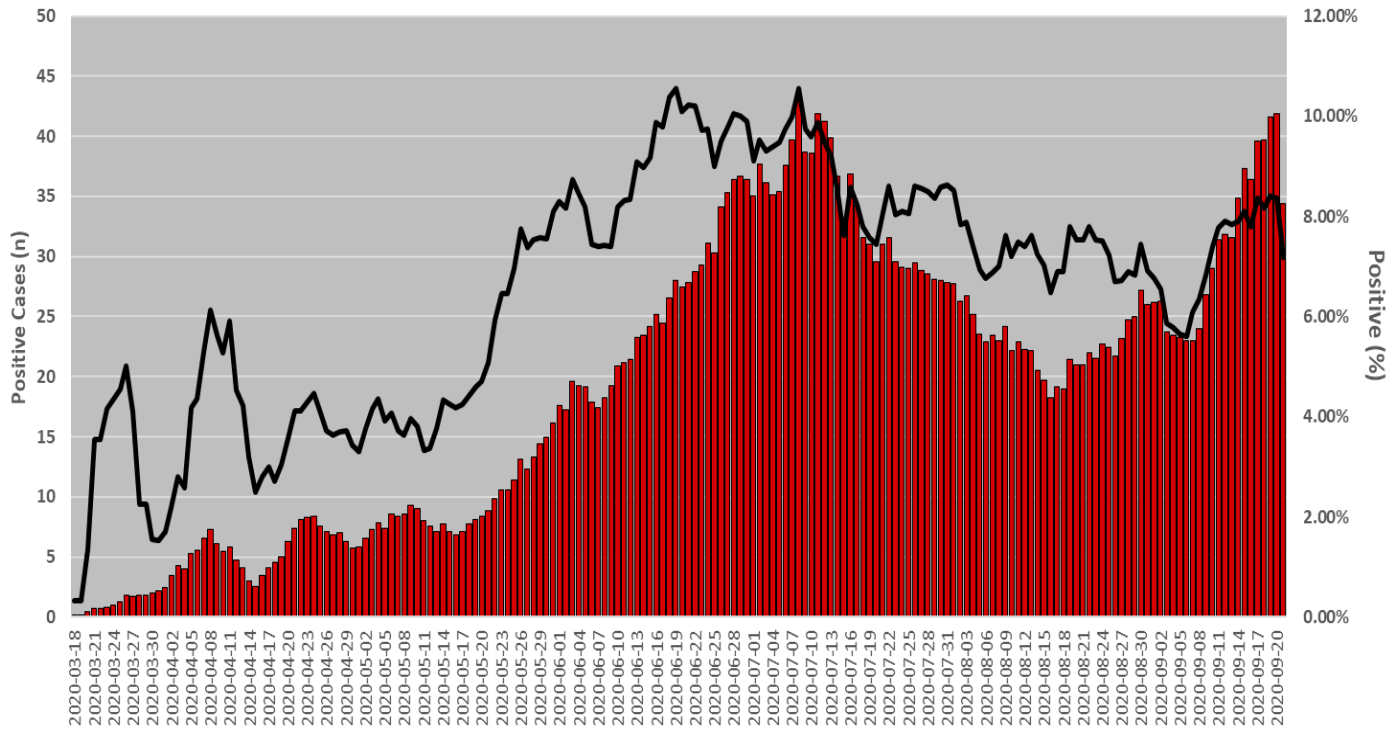
Pediatric SARS-CoV-2 Tests by Age Group



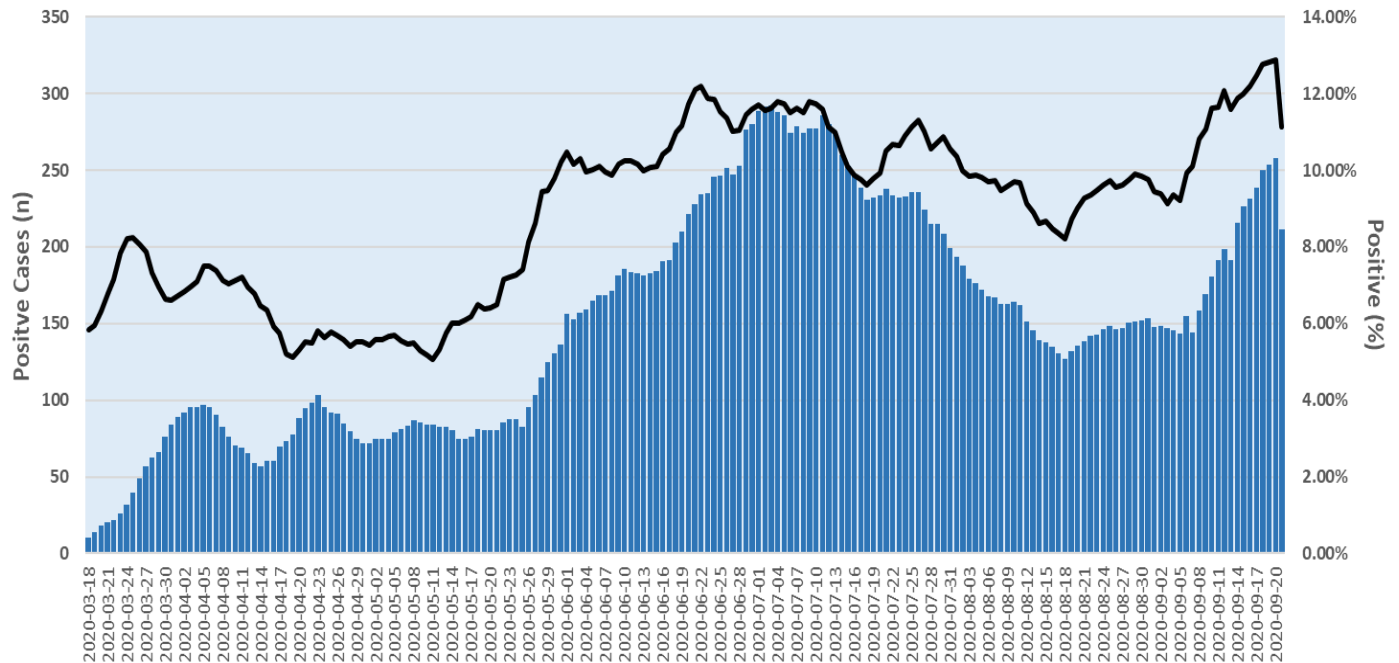
Adult SARS-CoV-2 Tests by Age Group



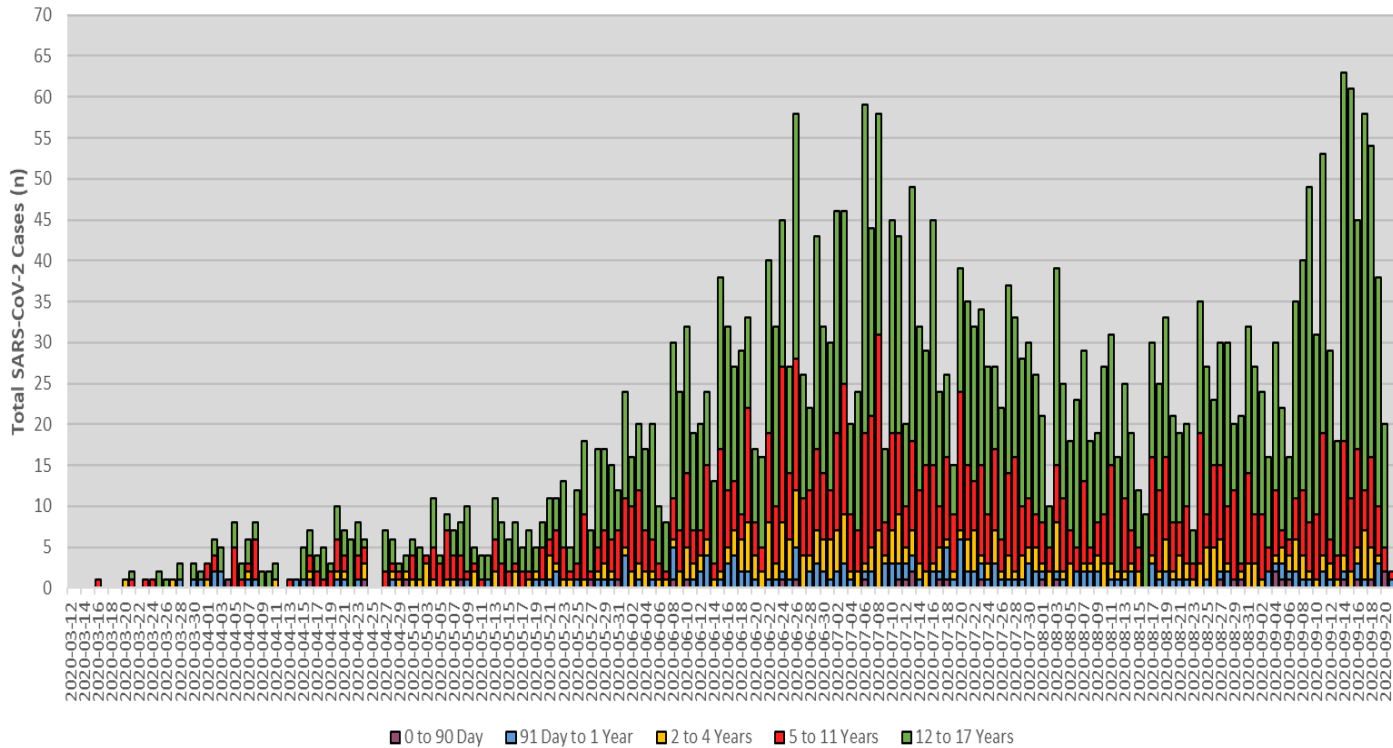
Pediatric SARS-CoV-2 Case Trend 7-day Moving Average



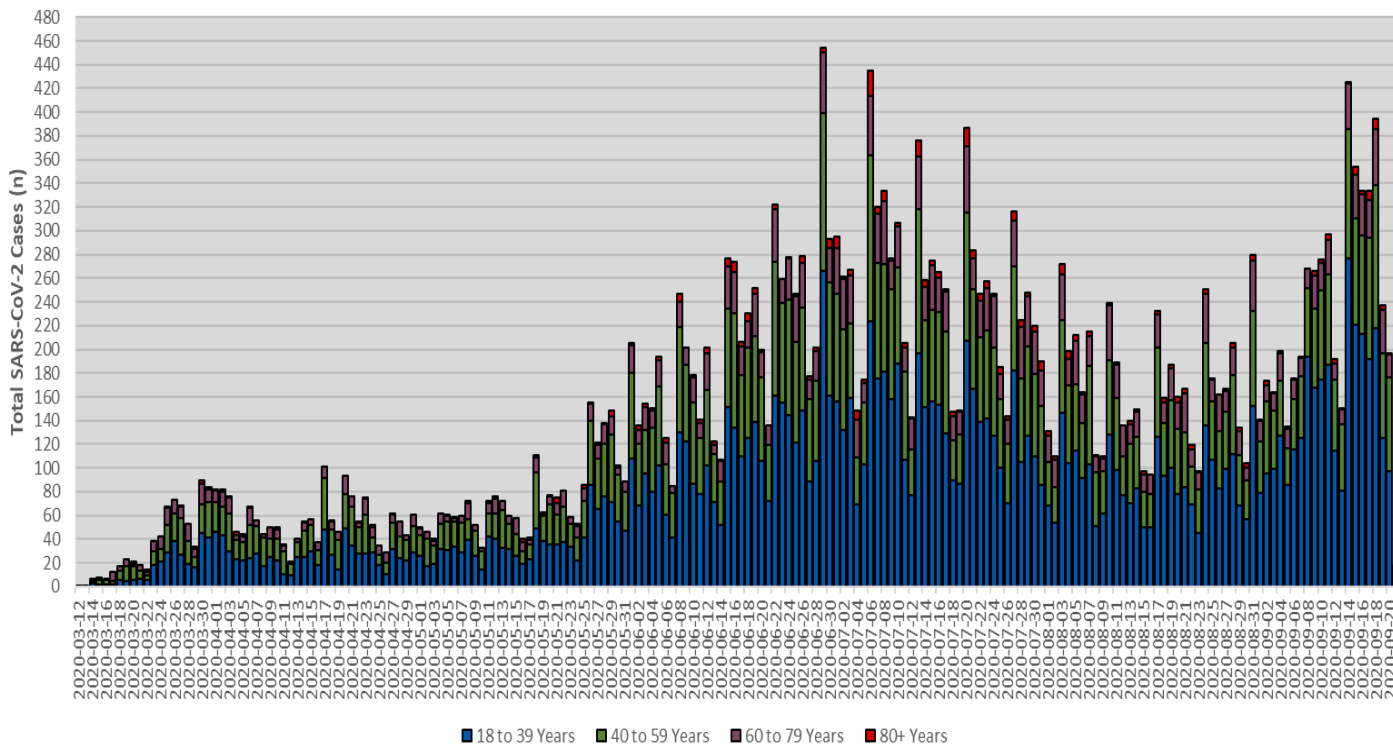
Adult SARS-CoV-2 Case Trend 7-day Moving Average



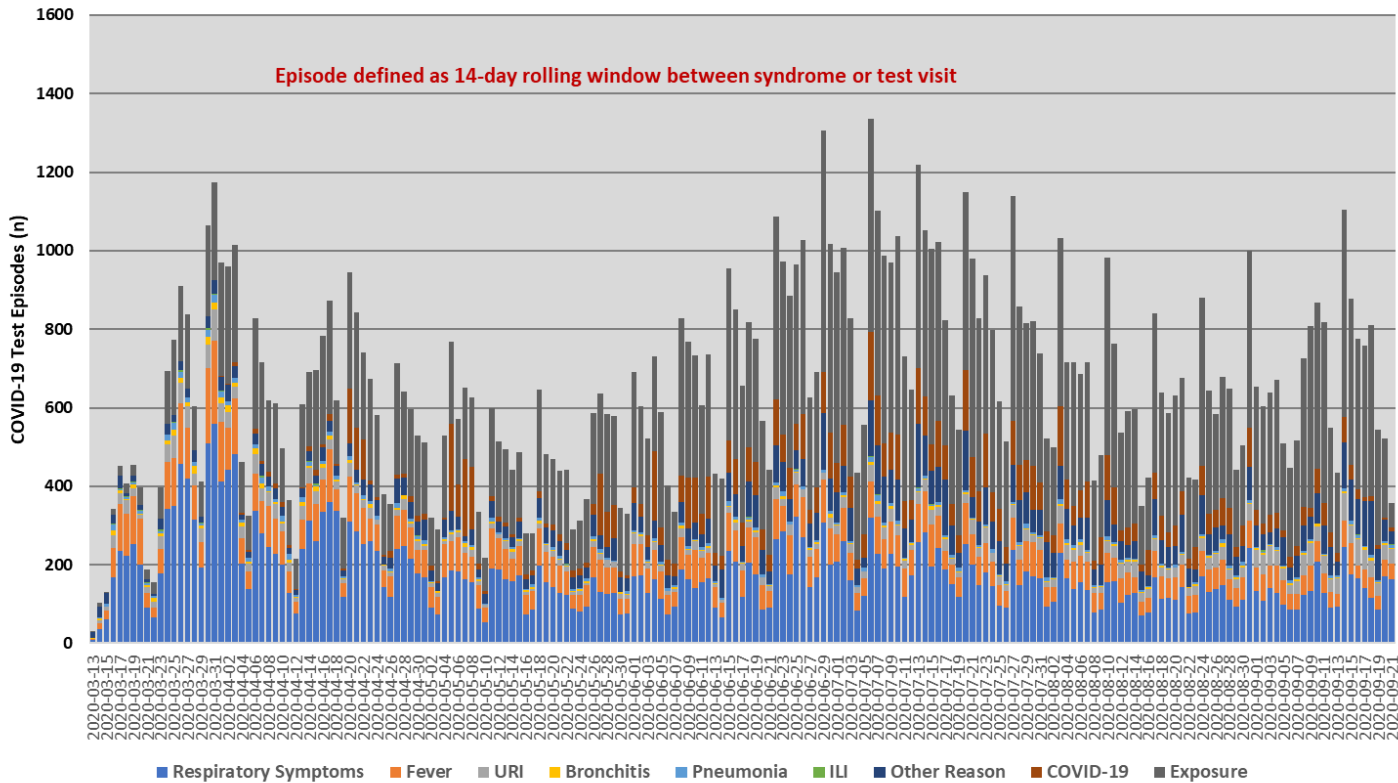
Pediatric SARS-CoV-2 Detected Cases by Age Group



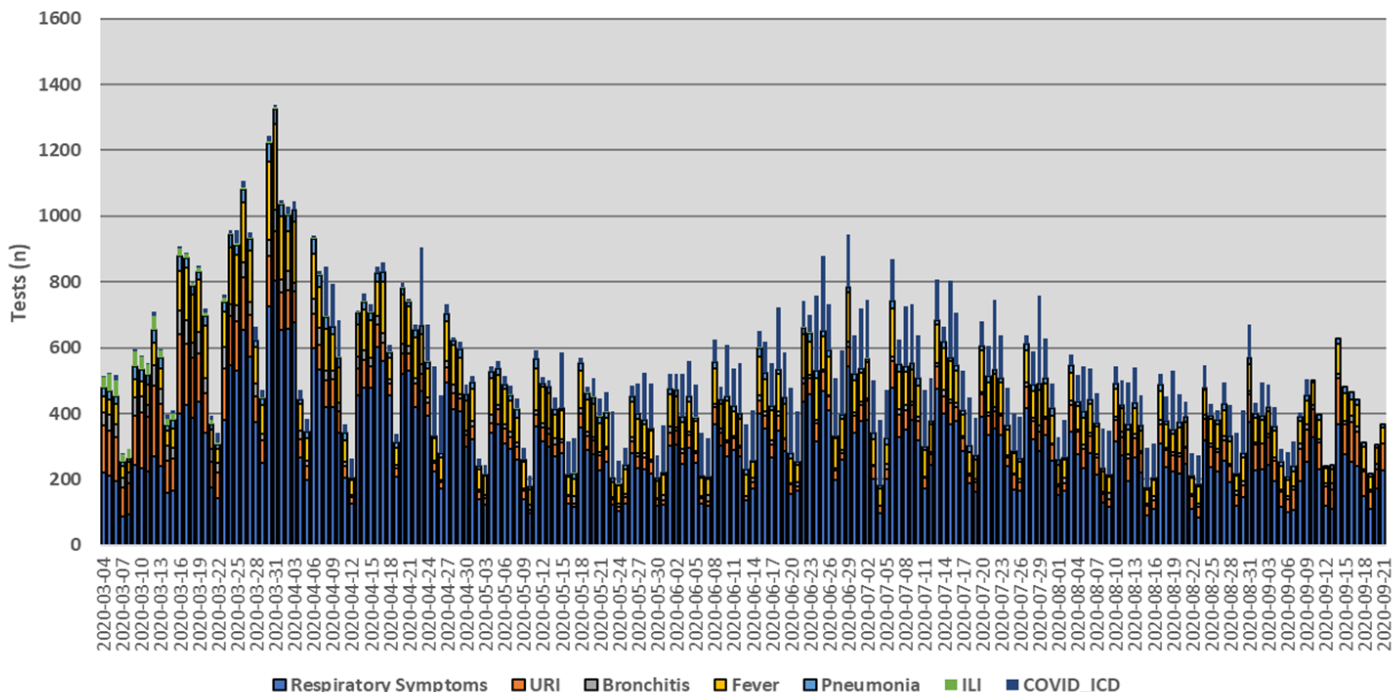
Adult SARS-CoV-2 Detected Cases by Age Group



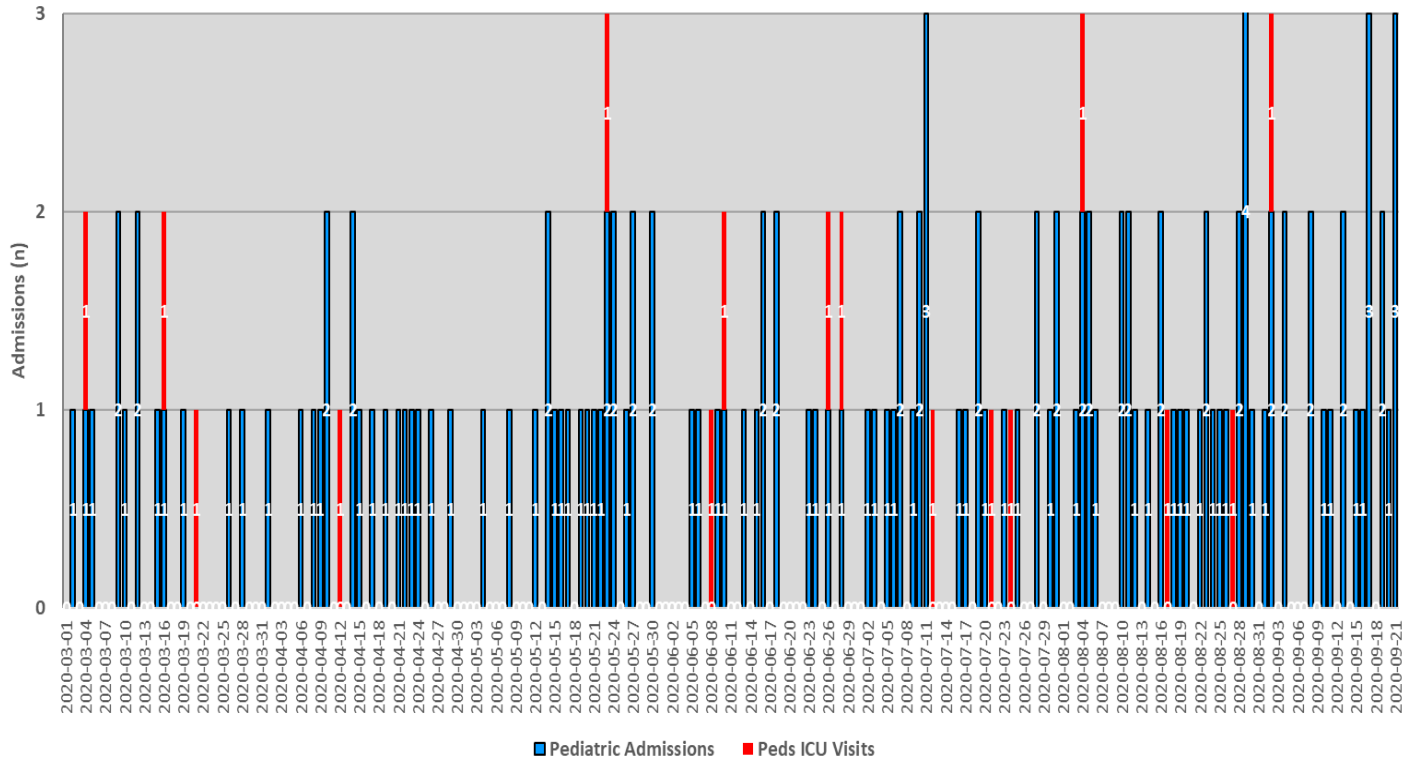
SARS-CoV-2 Testing Reasons by Episode



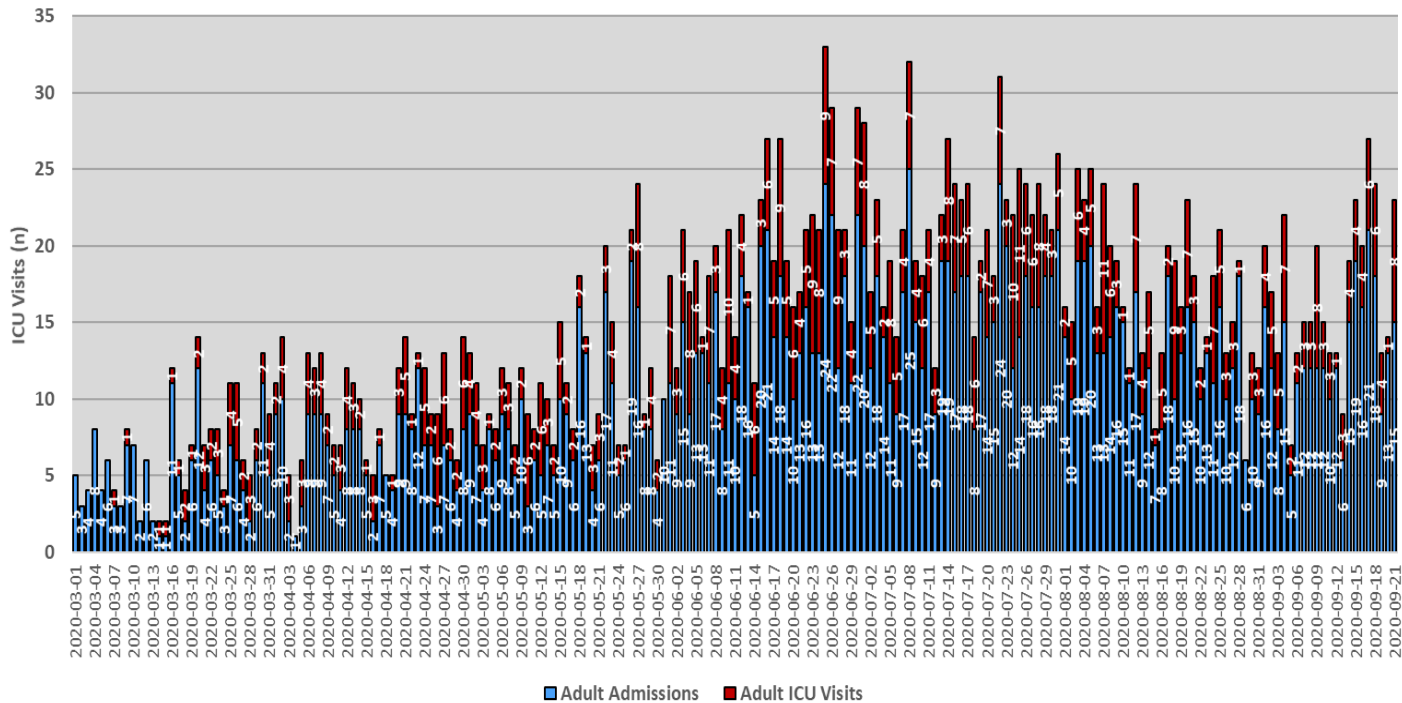
"Acute Respiratory Illness" Episode with SARS-CoV-2 Test By Syndrome



Lab-Confirmed COVID-19 Pediatric Hospital Admissions

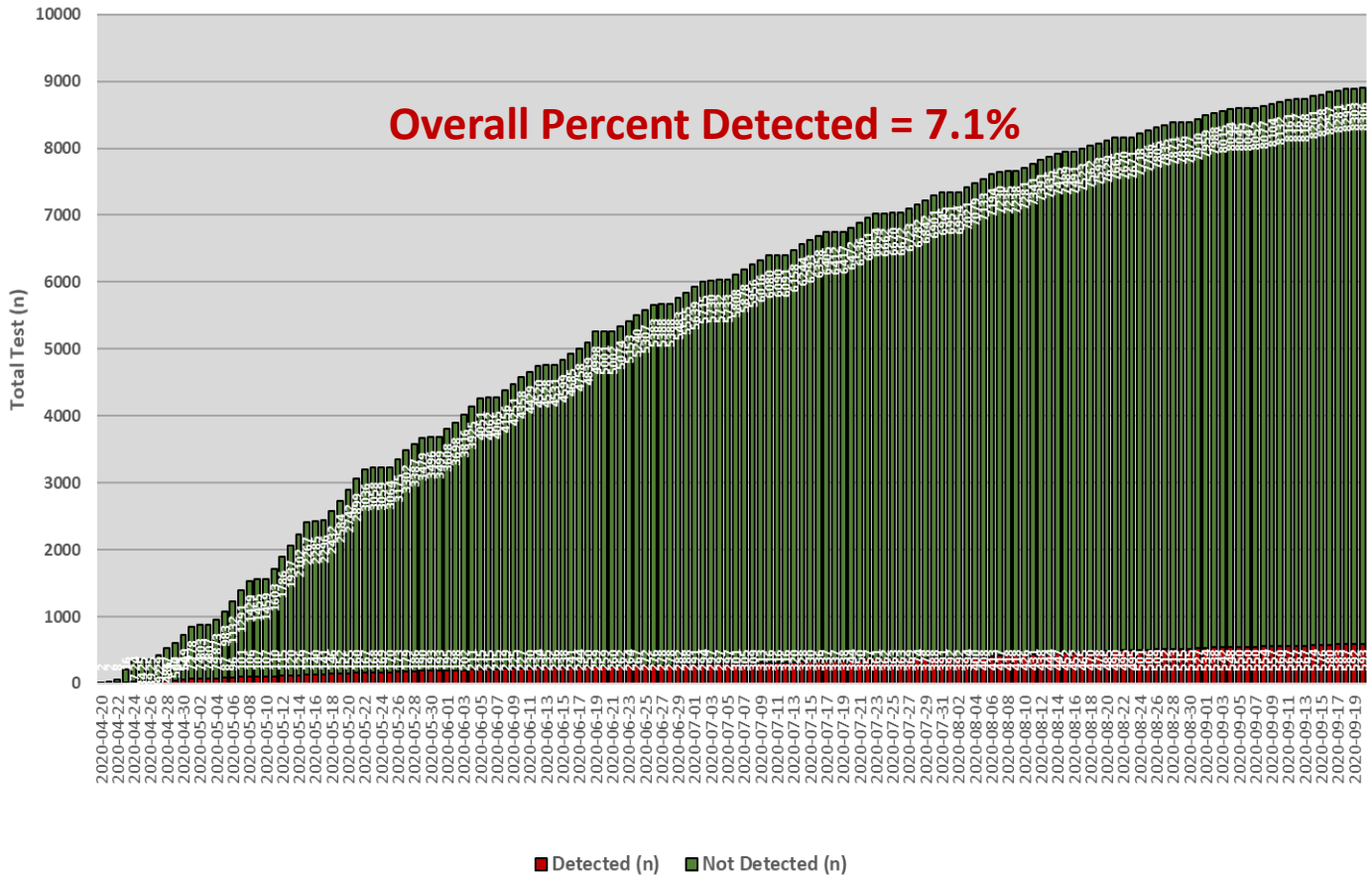


Lab-Confirmed COVID-19 Adult Hospital Admissions

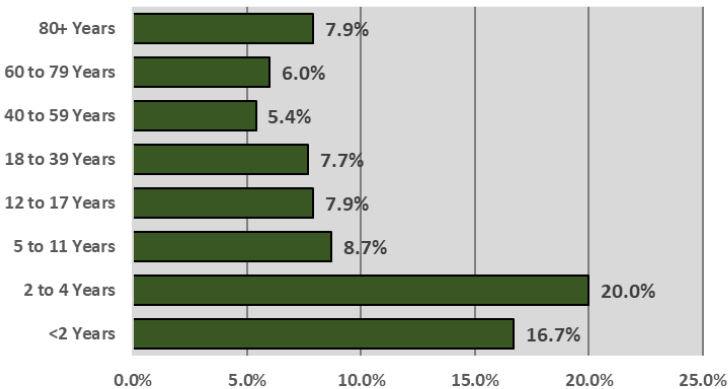


SARS-CoV-2 Antibody Tests

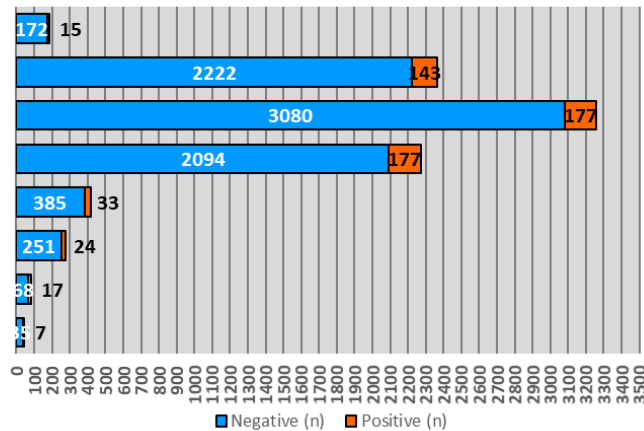
Cumulative Results



SARS-CoV-2 Antibody Percent Detected by Age Group

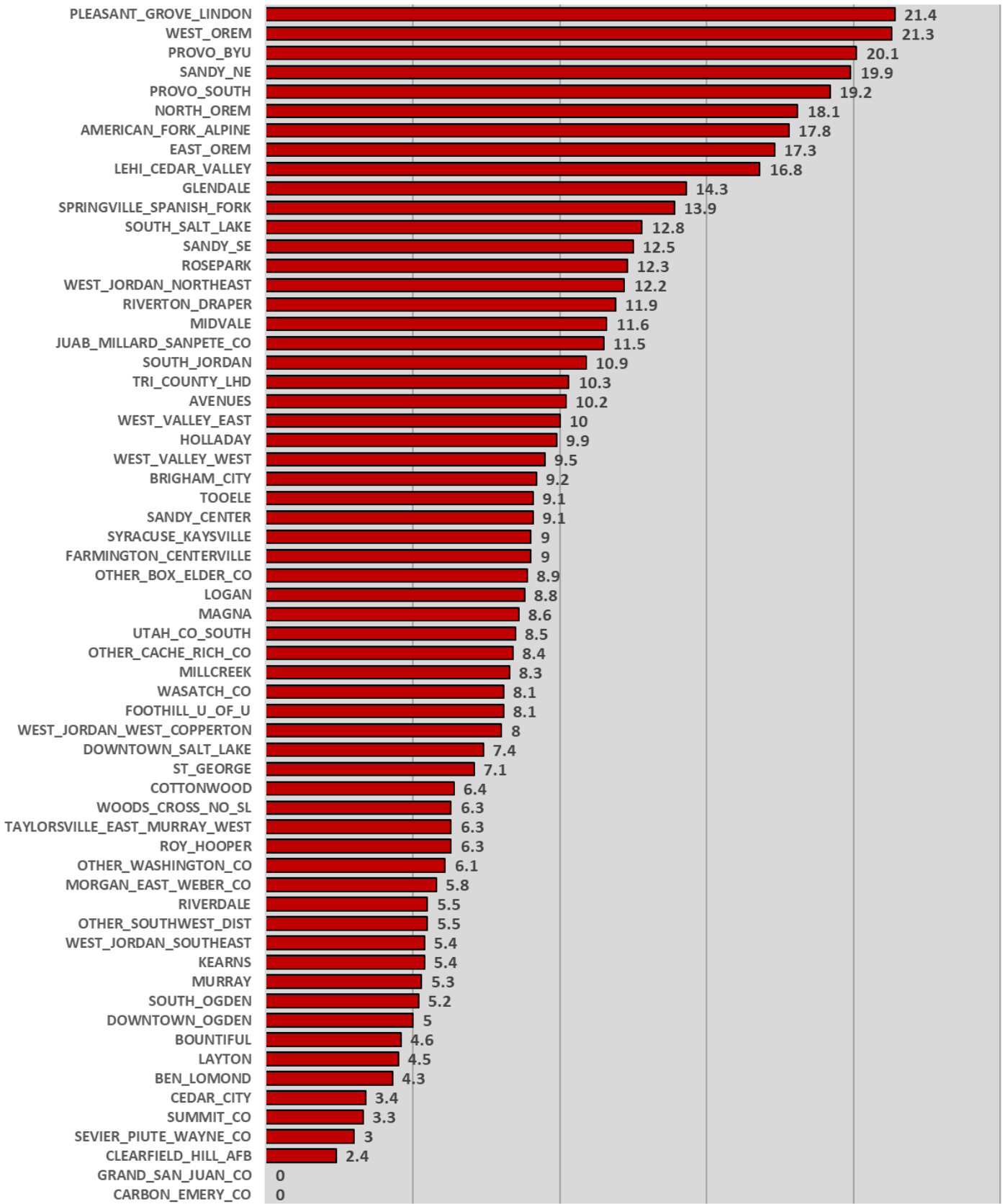


SARS-CoV-2 Antibody Tests by Age Group



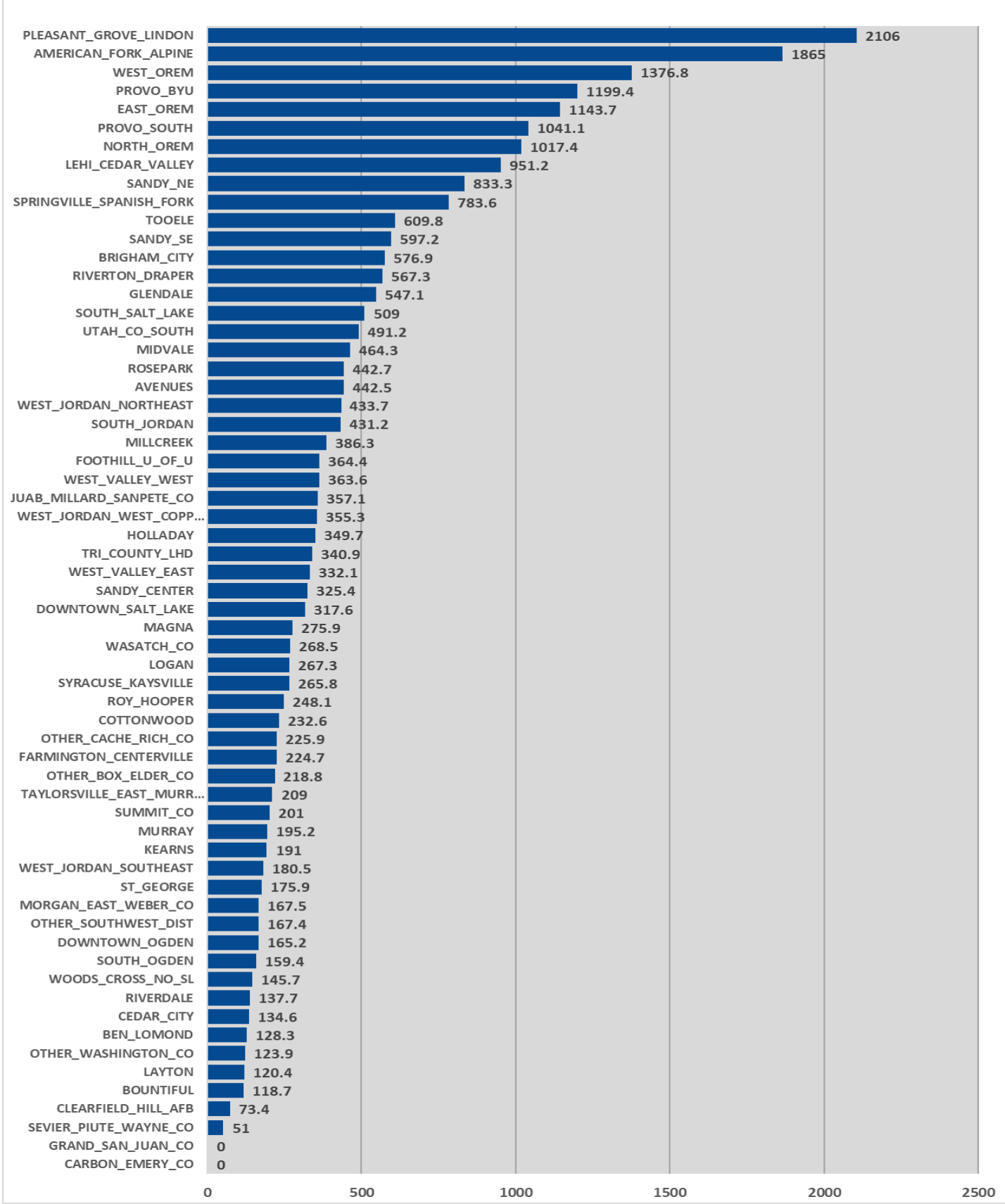
COVID- 19 Report Date: September 22, 2020

SARS-CoV-2 Percent Positive by UDOH Small Statistical Area's



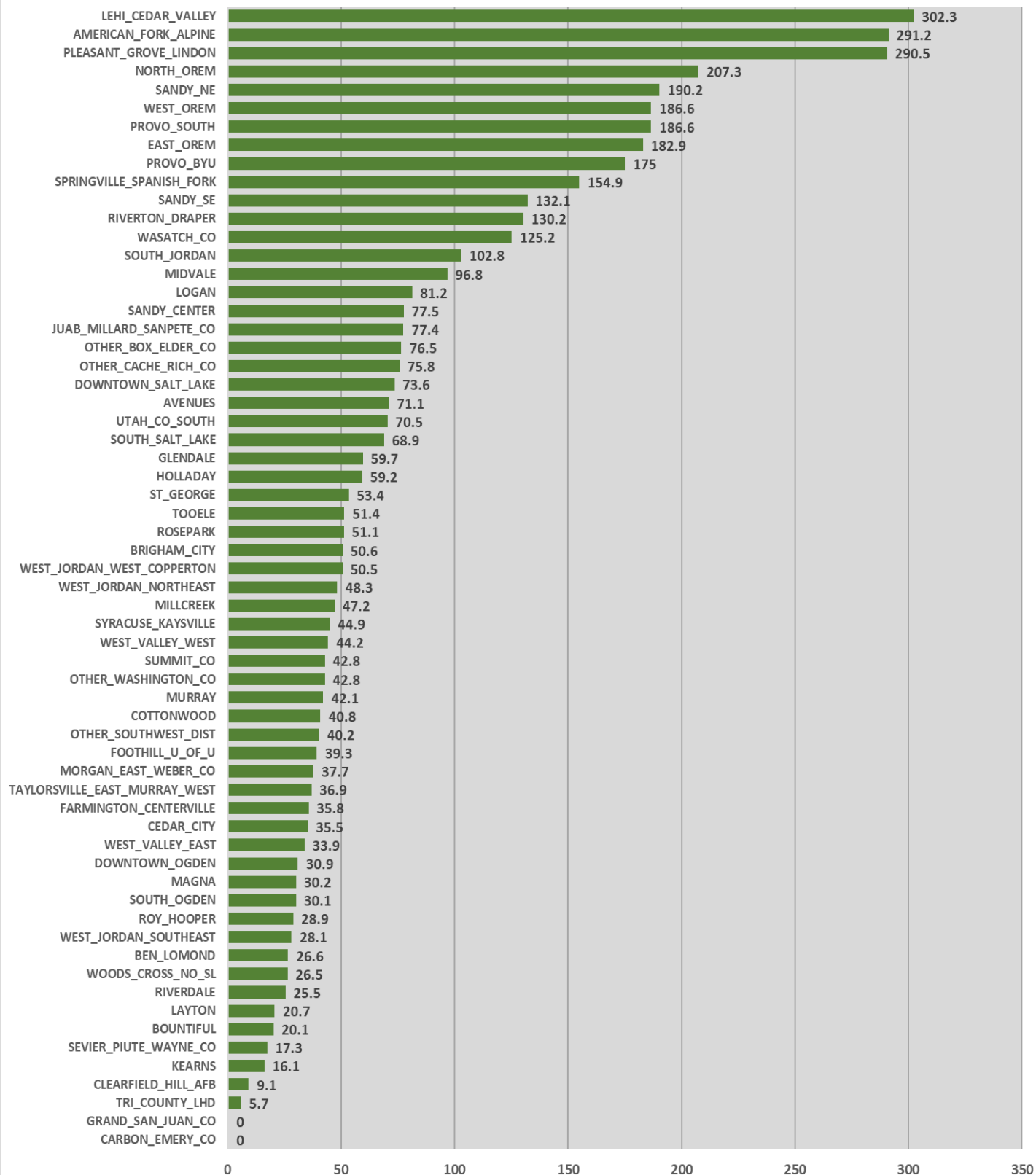
COVID- 19 Report Date September 22, 2020

Cases per 10,000 IH Visits by UDOH Small Statistical Area's



COVID- 19 Report Date: September 22, 2020

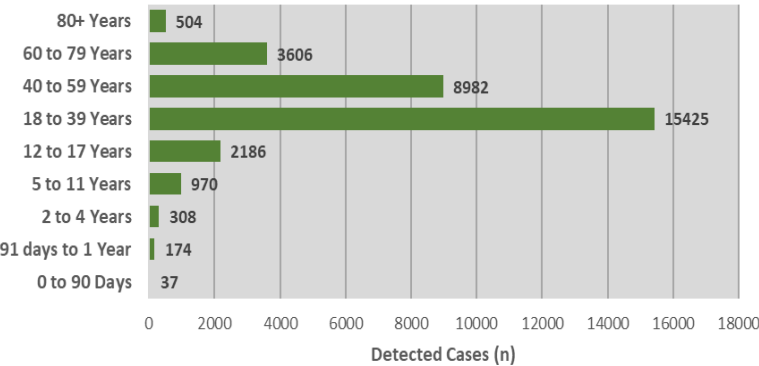
Cases per 100,000 Population by UDOH Small Statistical Area's



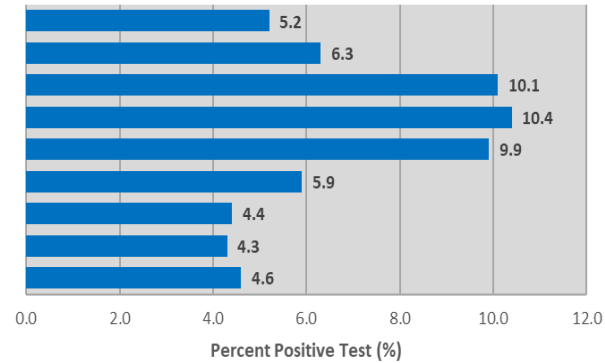
COVID- 19 Report Date: September 22, 2020

Outcome Rates by Age Group

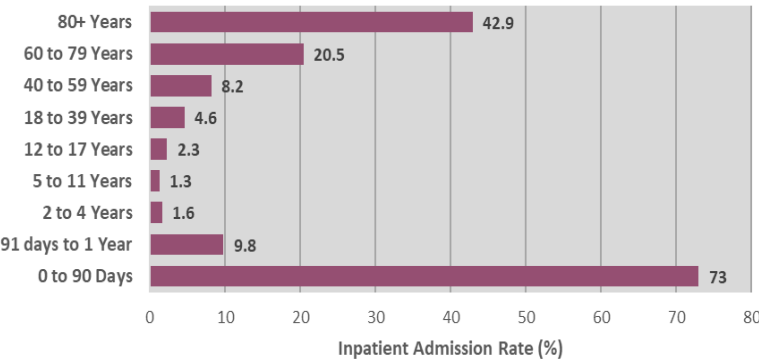
SARS-CoV-2 Detected Cases



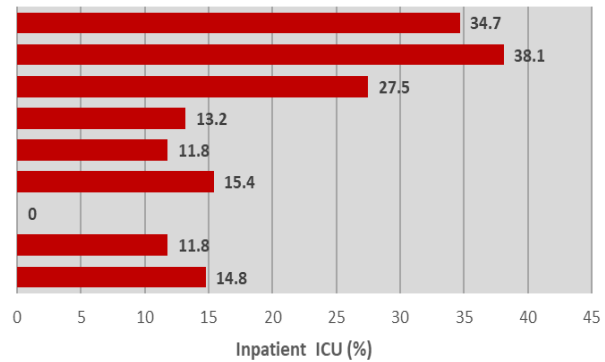
SARS-CoV-2 Percent Positive Rate



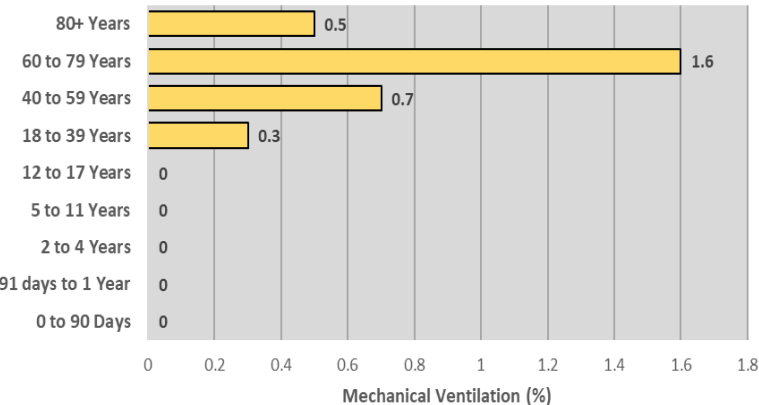
Inpatient Admission Rate for SARS-CoV-2



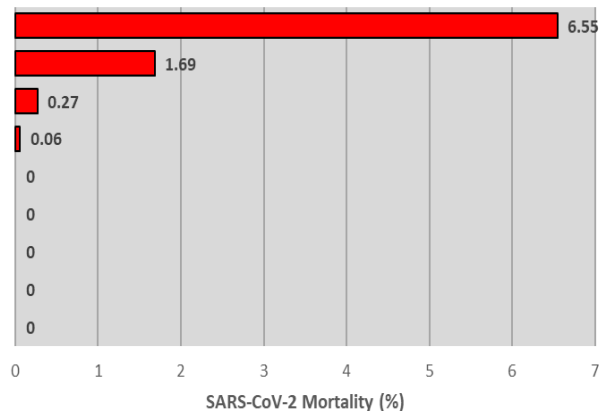
Rate of SARS-CoV-2 Inpatients with ICU Visit



Rate of SARS-CoV-2 Inpatients Requiring Mechanical Ventilation



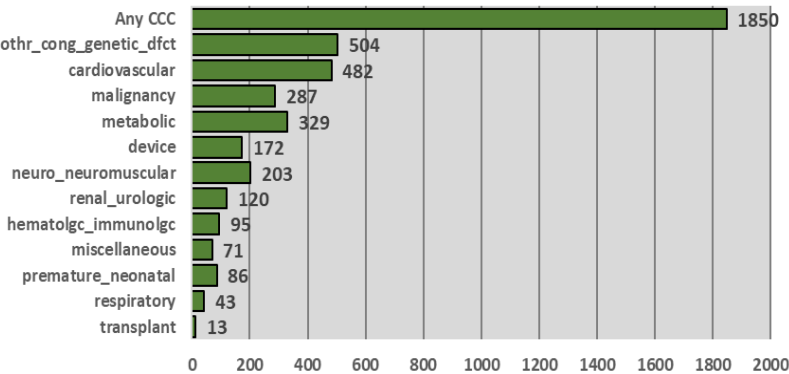
SARS-CoV-2 Mortality Rate



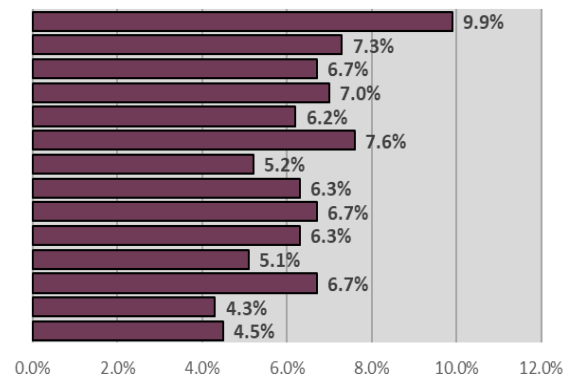
COVID- 19 Report Date: September 22, 2020

Outcome Rates by Feudtner's Complex Chronic Conditions Patients (0-39 Years Old)

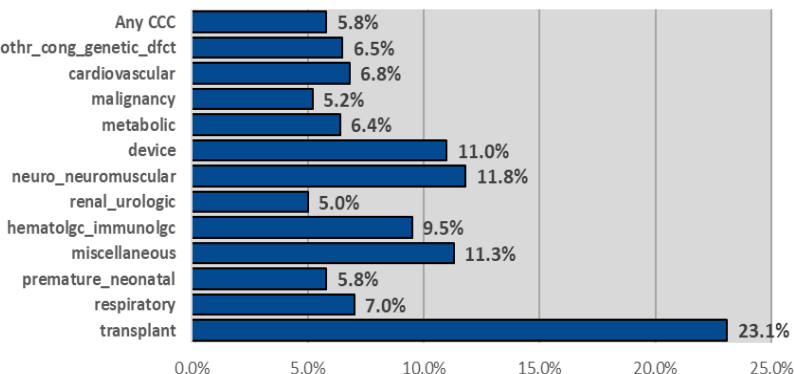
SARS-CoV-2 Positive (n)



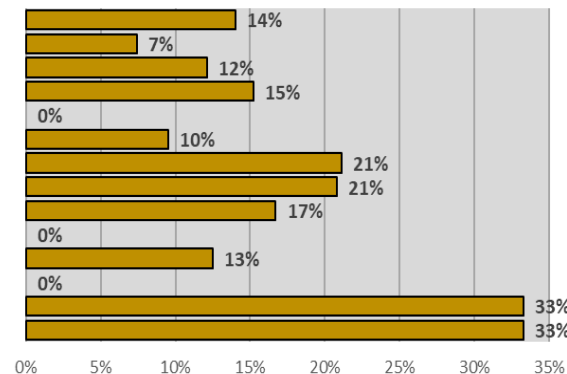
SARS-CoV-2 Positive(%)



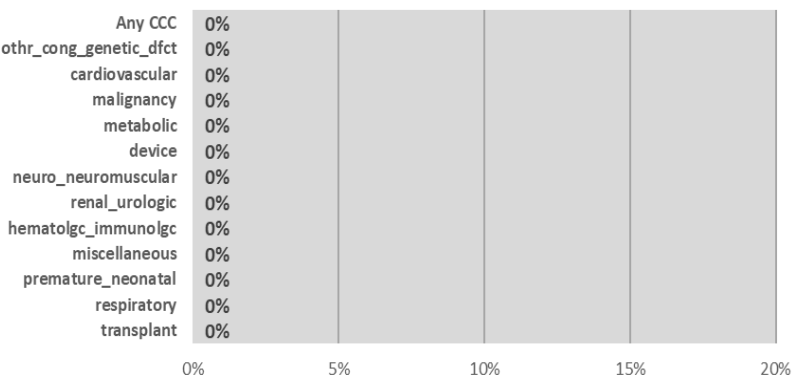
Inpatient Admission (%)



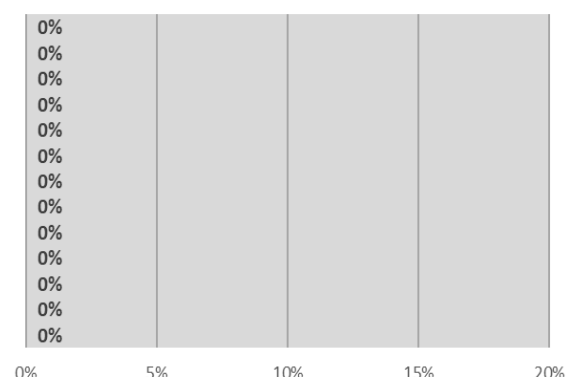
Inpatient ICU Visit (%)



Inpatient Mechanical Ventilation (%)



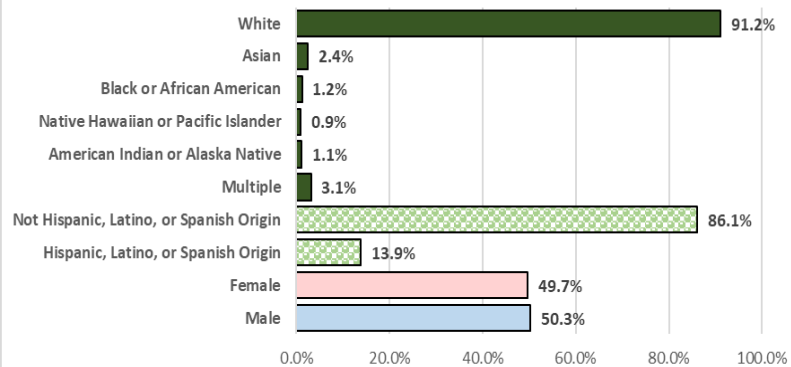
Mortality (%)



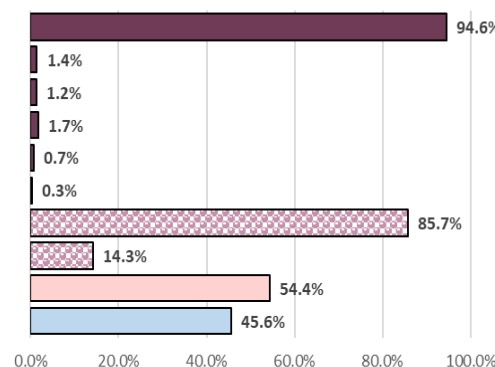
Race, Ethnicity, and Gender Disparity

Outcome Proportions by Group

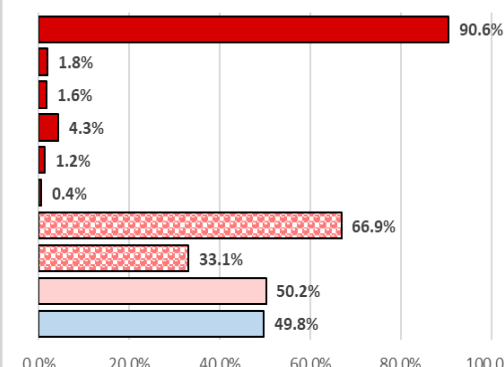
Utah 2020 Population Proportion



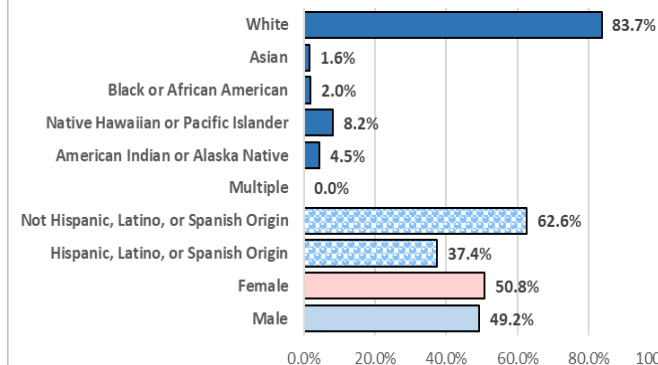
Total Tests



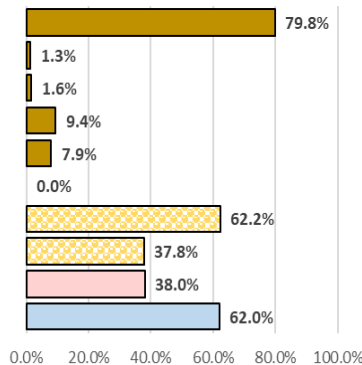
SARS-COV-2 Detected



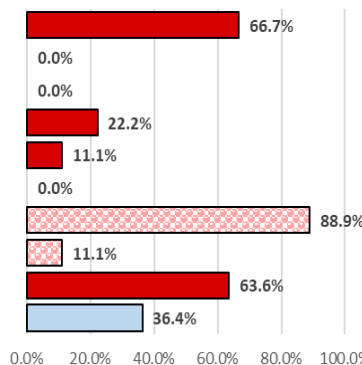
Inpatient Admission



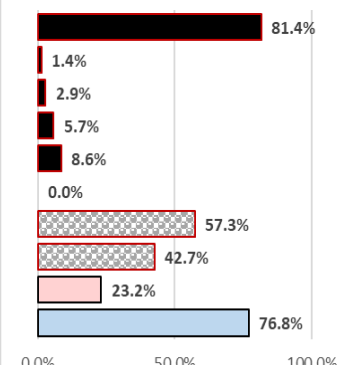
ICU Visit



Current Mechanical Ventilation

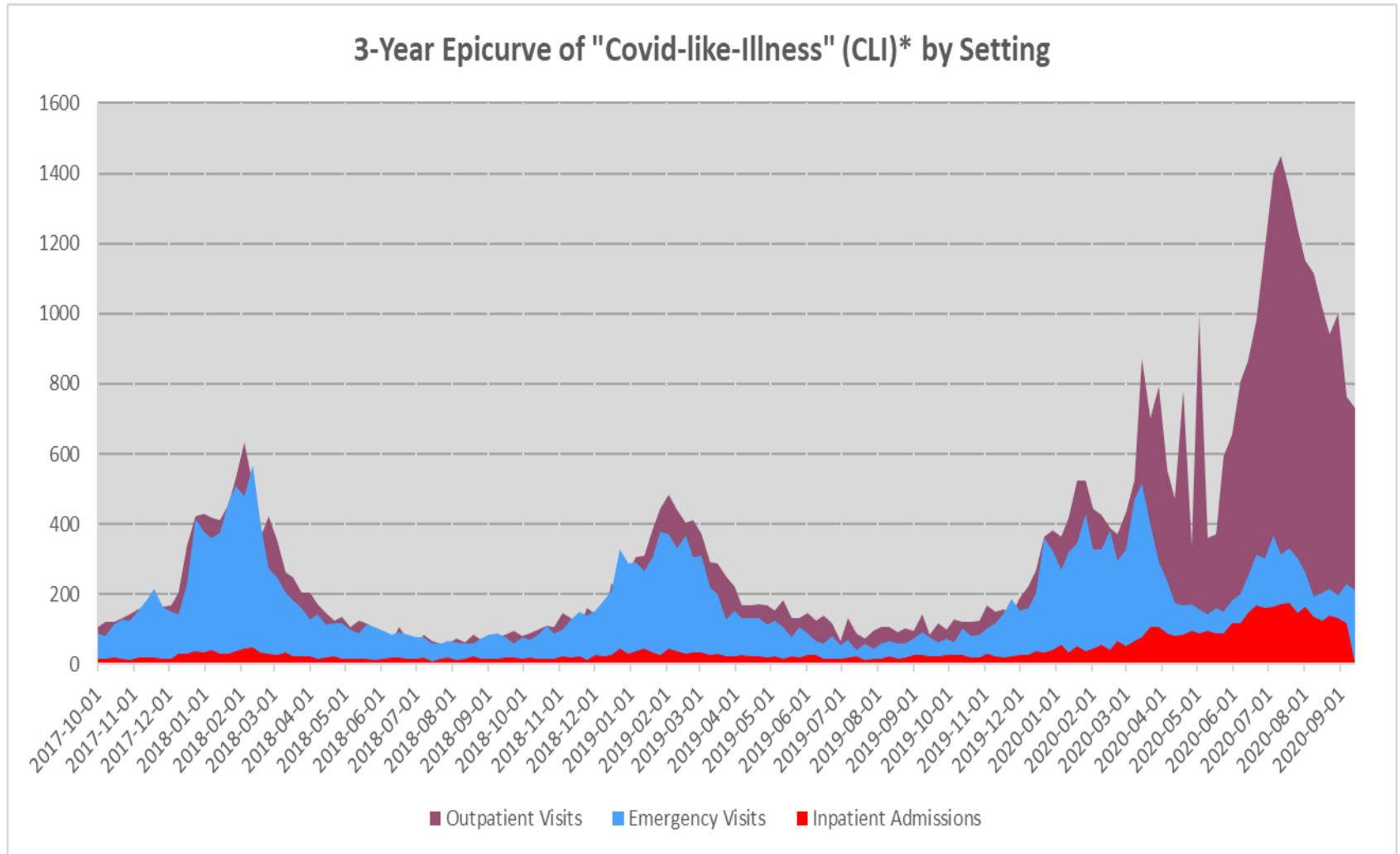


Mortality



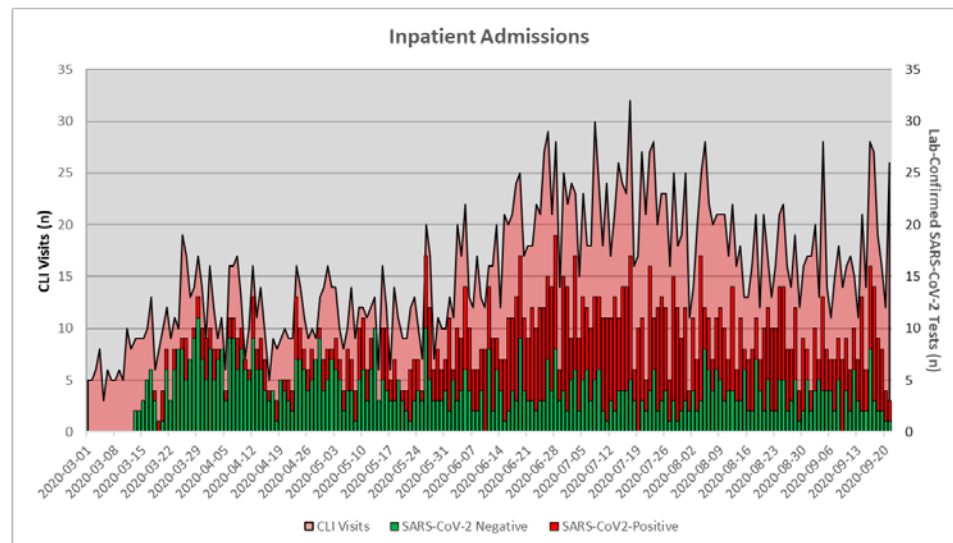
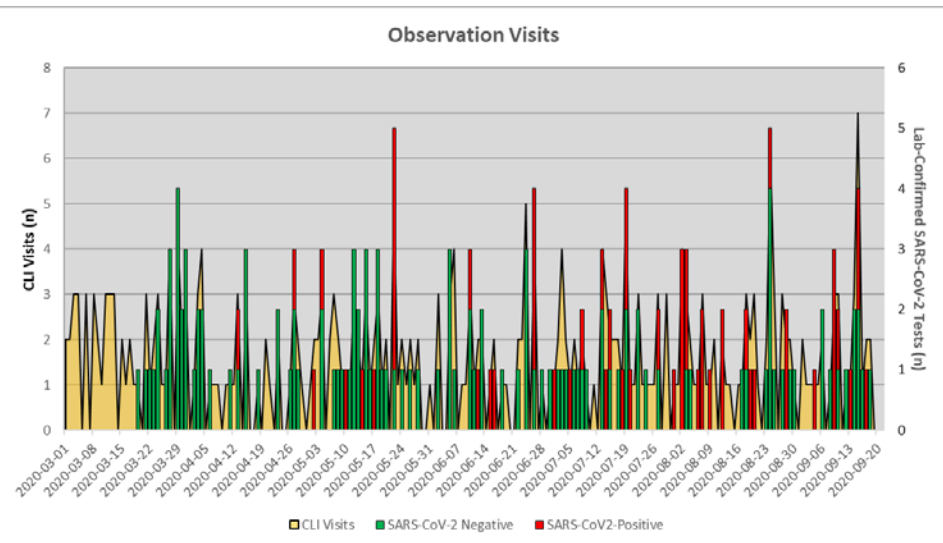
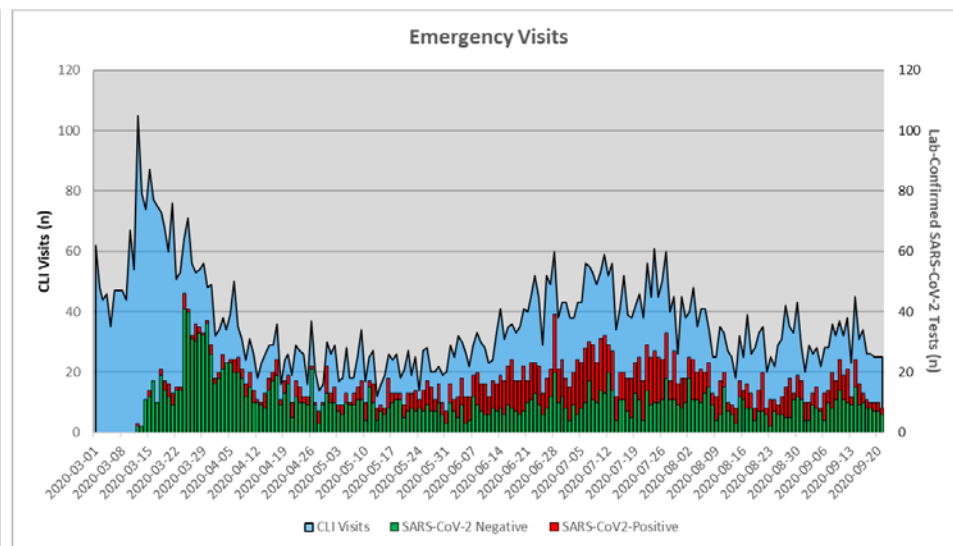
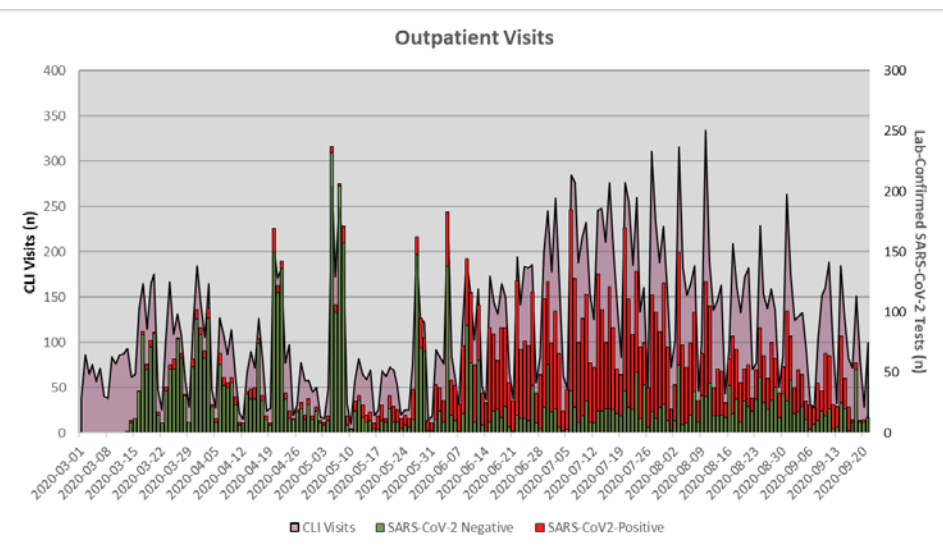
Disparity defined by comparing differences of outcome proportion to population proportion for each group member

Note: Race, Ethnic, and Gender Groups analyzed separately

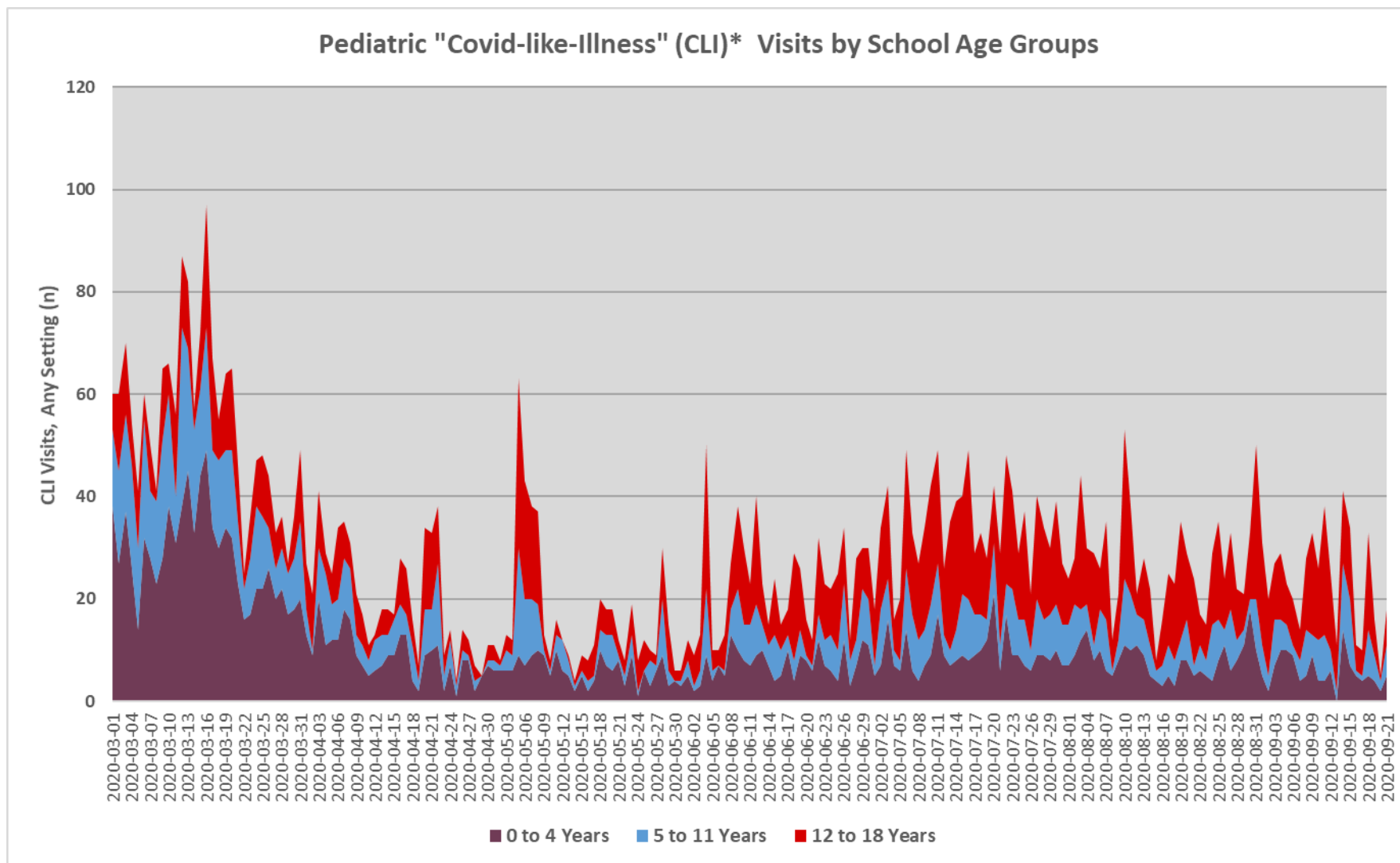


* CDC CLI visit definition using chief complaint and ICD 10 diagnosis codes

COVID-Like-Illness (CLI)* Visits vs Lab-Confirmed Tests by Setting



* CDC CLI visit definition using chief complaint and ICD 10 diagnosis codes



* CDC CLI visit definition using chief complaint and ICD 10 diagnosis codes

Mother & Newborn SARS-CoV-2 Testing Around Delivery Date

[illegible]

Pregnant Women SARS-CoV-2 Testing

