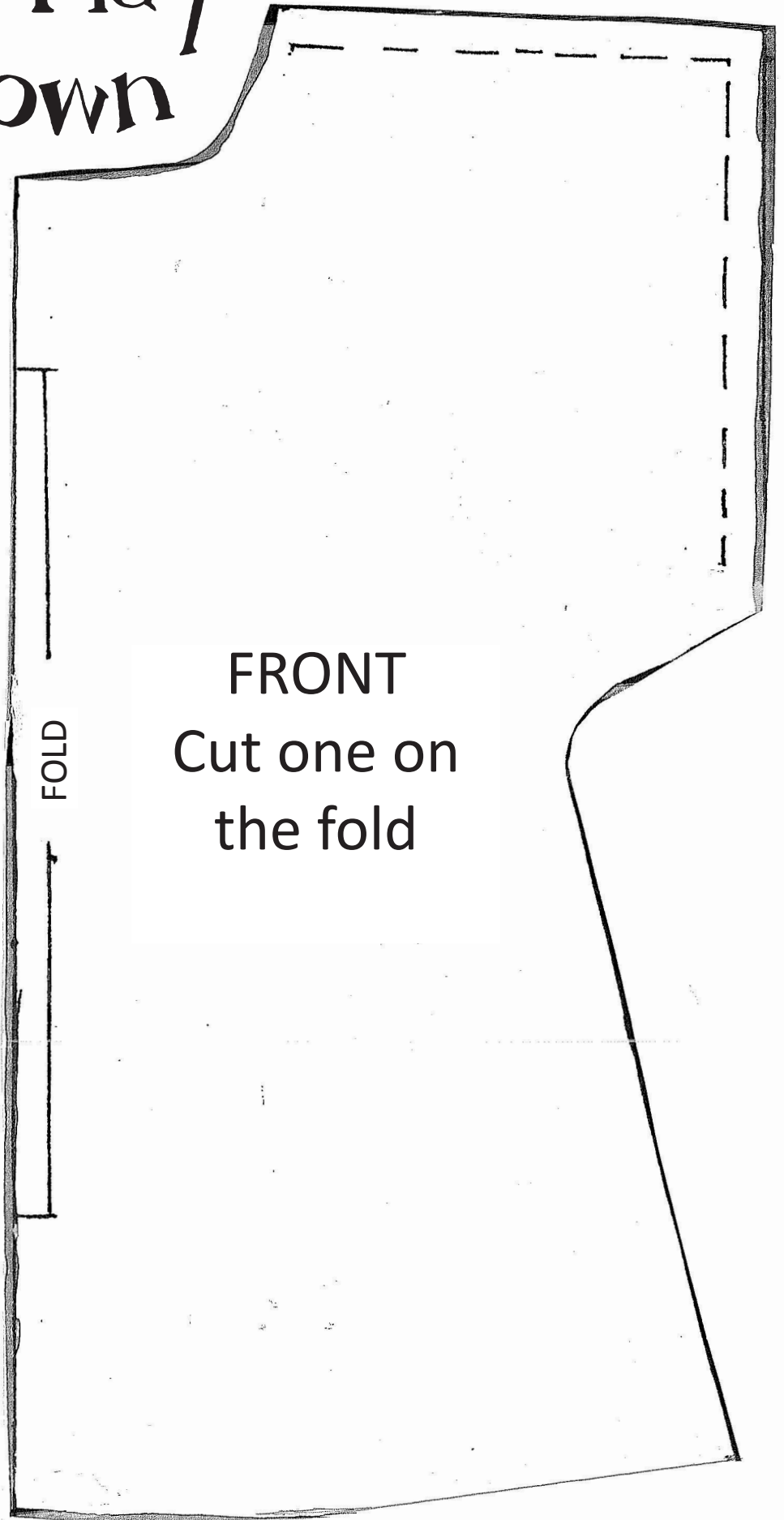


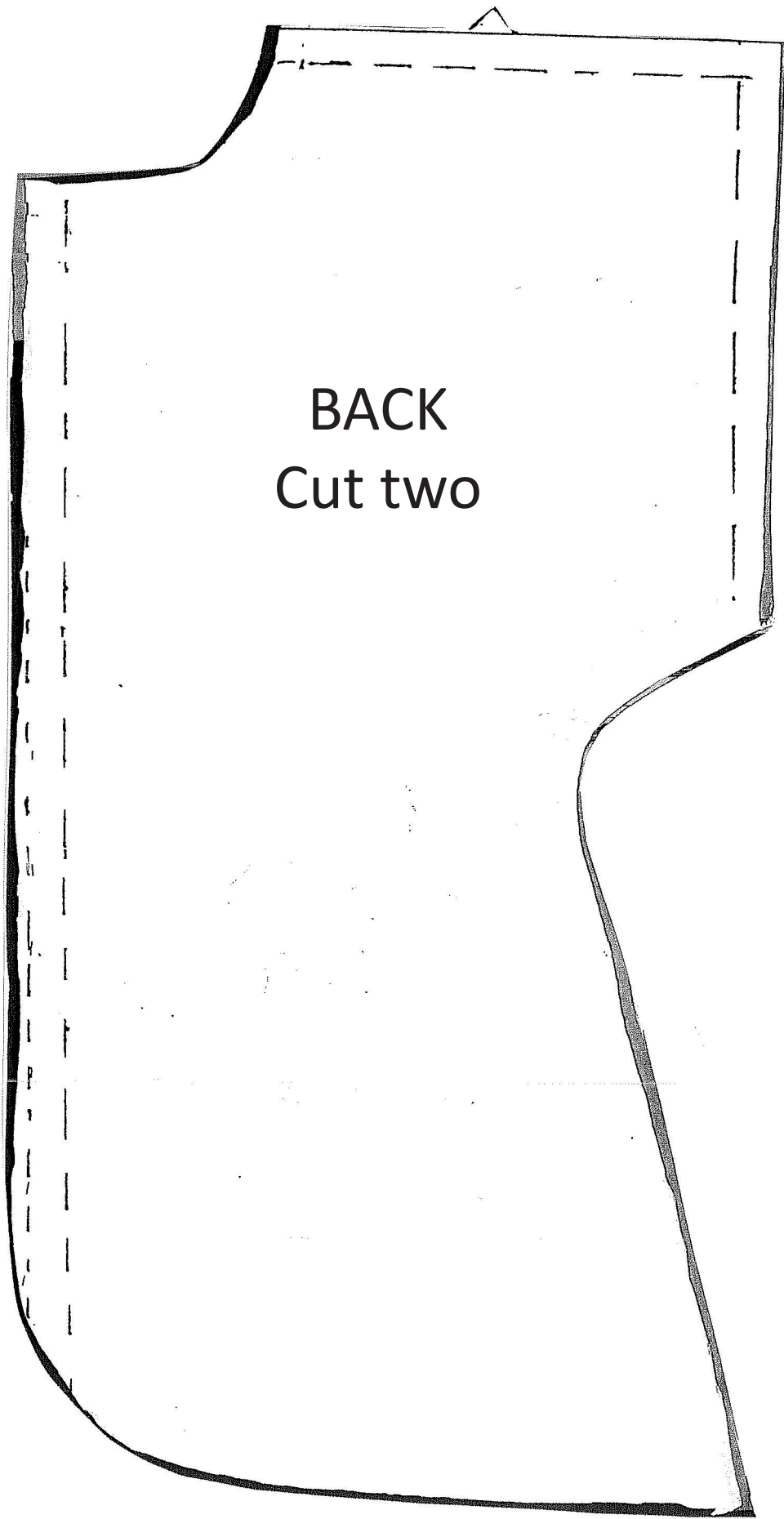
Medical Play Doll Gown

Instructions:

1. All seams should be 1/4 inches.
2. Sew sides and shoulder seams, connecting at the arrows.
3. Zig-zag stitch around the neck of the gown. If you have time, zig-zag around all parts.
4. Sew binding around neck.
5. Leave enough binding to tie at the back of the gown (5 - 7 inches for each side). If desired you can use snaps or Velcro instead of binding to fasten the back.
6. Hem bottom, back and arm holes. If desired, you can use binding around the bottom, back and arm holes; however, you will want to cut 1/4 inch off these areas before doing so to accommodate the added width of binding.



Medical Play Doll Gown - page 2



BACK
Cut two