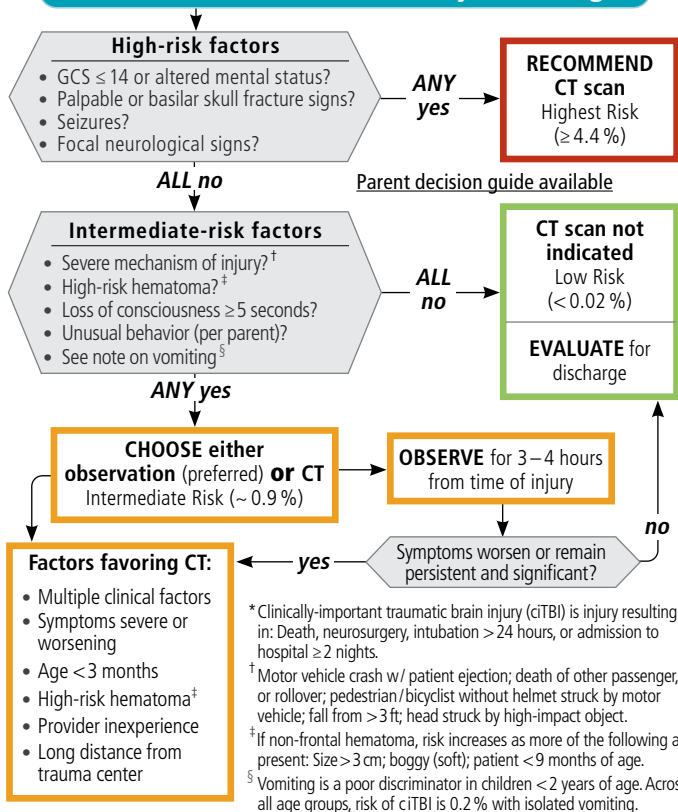


# Minor Head Trauma: CT scan?

**Reference**  
**CPM here**

## Risk-based assessment of ciTBI\*

### Minor head trauma: Under 2 years of age

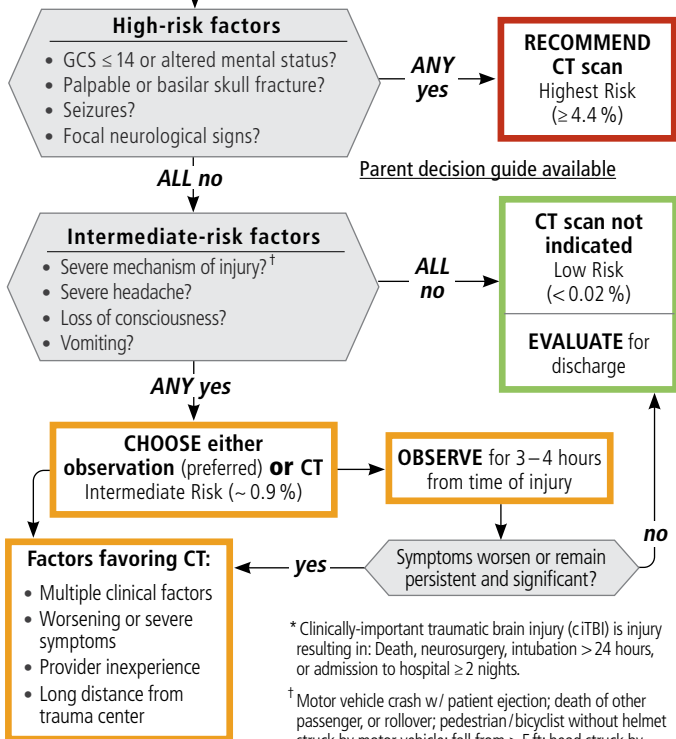


# Minor Head Trauma: CT scan?

**Reference**  
**CPM here**

## Risk-based assessment of ciTBI\*

### Minor head trauma: 2 years or older



\* Clinically-important traumatic brain injury (ciTBI) is injury resulting in: Death, neurosurgery, intubation  $> 24$  hours, or admission to hospital  $\geq 2$  nights.

<sup>†</sup> Motor vehicle crash w/ patient ejection; death of other passenger, or rollover; pedestrian/bicyclist without helmet struck by motor vehicle; fall from  $> 5$  ft; head struck by high-impact object.