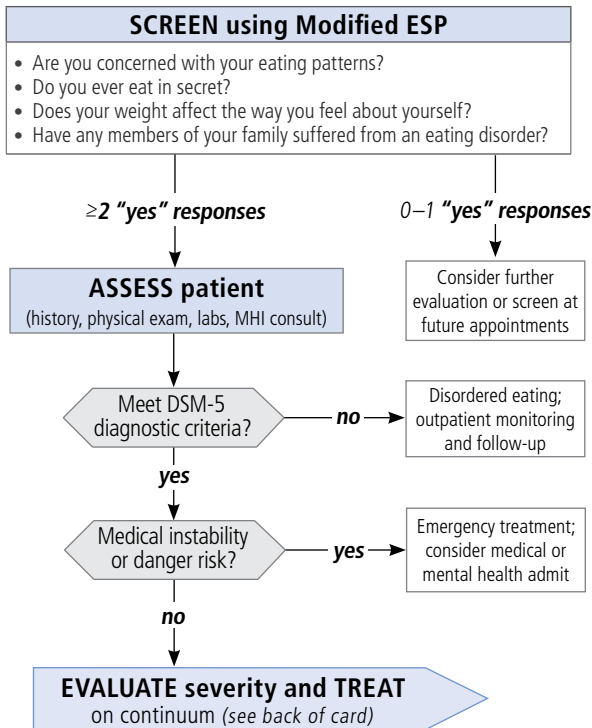


Eating Disorders

Reference
Link

SCREENING and DIAGNOSIS



Eating Disorders

Reference
Link

TREATMENT

Eating disorder diagnosis

TREAT on a continuum

Treatment levels

Level 1: PCP with MHI	Level 2: Multidisciplinary team	Level 3: ED/inpatient	Level 4a: Residential	Level 4b: Intensive outpatient
Medically stable		Unstable	Stable	
No comorbid psych diagnoses/risk of danger	≥1 comorbid psych diagnoses	Risk of danger to self or others	≥1 comorbid psych diagnoses	
Screen positive; does not meet diagnostic criteria	Meets diagnostic criteria for anorexia nervosa, bulimia nervosa, binge-eating disorder, or other eating disorder			
BMI within acceptable limits for age	Persistent weight loss; BMI <18	Weight <75% IBW*; rapid weight loss	75% to 80% IBW	85% to 90% IBW
			Unable to achieve prescribed weight; uncontrolled symptoms	
Function not impaired	Function somewhat impaired	Function and social support	Cannot function in environment	Function improved
Good social support		N/A	Poor social support	
<i>Treatment level transitions as condition worsens or resolves</i>				

*IBW =
ideal body
weight

After condition resolves,
ongoing PCP awareness and support