

SEWN ITEMS

➤ QUILT/BLANKETS

In consideration of the recipients, we appreciate blankets made in smoke-free, pet-free homes. Polar fleece blankets and tied or sewn quilts of all sizes (from crib to twin size) are welcome. Most donated quilts are given to patients to take home. **The edges MUST be sewn and bound well.**

BLANKET TYPE	GOOD SIZE
Cribs	45" x 60"
Older kids	45" x 72"
Infants and babies	45" x 45"



➤ HOSPITAL BUDDIES

These simple, stuffed muslin dolls are used for teaching children about medical procedures in a non-threatening and indirect way. Children are given these dolls for teaching, diversion, or to use for companionship when going to surgery. Children of all ages can personalize their own dolls by coloring them with markers provided by the hospital and eventually take them home. Pattern and instructions are on the following page.

FRONT



FRONT



PROCEDURE DOLL AND GOWN

Dolls can be made out of sheet-type fabric, preferably a light color, so the child can draw on the doll face. See the following pages for the pattern.

➤ DOLL

1. Cut out pattern piece B, leaving black outline on pattern. Fold B on fold line, tape or glue B to bottom of A at placement line.
2. Place pattern on fold of fabric and cut two: one for the front; one for the back.
3. With right sides together, using a 1/4-inch seam, sew back and front together, leaving an opening as shown on pattern. Back stitch to secure seams.
4. Turn inside out and stuff with batting, starting with head, legs and arms. Stuff so doll is soft and squeezable. Stuff body last.
5. Hand sew the opening securely, being careful to fold seams into the doll.

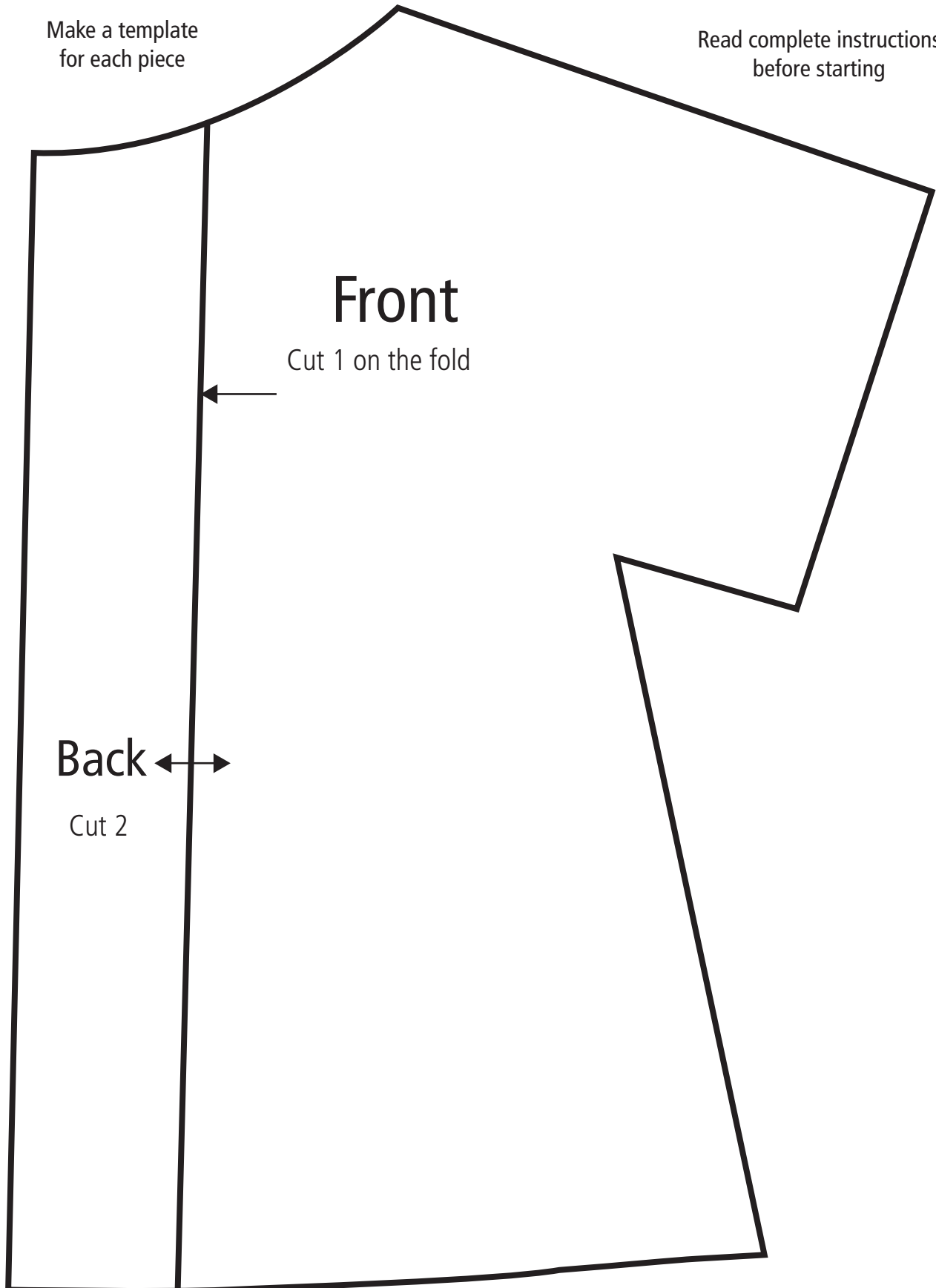
➤ GOWN

1. Select fabric with a "happy print" (small flowers or striped design) for boys and girls.
2. Each gown needs a piece of fabric measuring about 20" long and 16" wide.
3. You will need bias tape, twill tape or ribbon for the neck, and one set of round Velcro (not adhesive Velcro; Velcro will need to be sewn).
4. Fold the piece of fabric in half evenly to measure 20" long and 8" wide.
5. Line up pattern template on top of fabric with "front" on fold. Mark around and cut out.
6. Place pattern template for "back" on fabric, mark and cut out two pieces.
7. Zigzag or serge all raw edges.
8. Start to sew at shoulder, then hem sleeve. Sew sides together, hem bottom and back opening (start sewing from the bottom). Clip corners, curves as needed.
9. Sew bias tape, twill tape, or ribbon to wrong side of neck, then top stitch down on right side.
10. Sew circles of Velcro to close back.
11. OPTIONAL: Make bow and attach to neck.

PROCEDURE DOLL GOWN

Make a template
for each piece

Read complete instructions
before starting



Front

Cut 1 on the fold

Back

Cut 2

PROCEDURE DOLL

DOLL PATTERN
PIECE A

Place on Fold

CUT 2

PLACEMENT
LINE FOR PIECE B

FOLD LINE TO
ATTACH TO PIECE A

DOLL PATTERN
PIECE B

CUT 2

START STITCHING

Place on Fold

CUTTING LINE FOR LEGS

END STITCHING

HAND SEW OPENING

➤ BOO-BOO BEAR

Place pattern on fold x 2 for 1 bear.

Two bears can be made from 1/3 yard of fabric.

1. Cut out front and back.
2. Hand or machine stitch felt heart to the front of the bear.
3. With right sides together, sew 1/4-inch seam around the bear.
4. Leave a 3-inch opening on a leg so it can be turned and stuffed.
5. Clip the curved edges.
6. Turn and stuff.
7. Hand stitch the opening.

